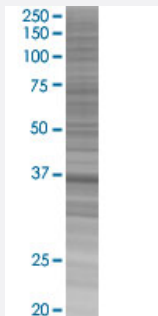


EIF2S1 293T Cell Transient Overexpression Lysate(Denatured)

Catalog # H00001965-T03

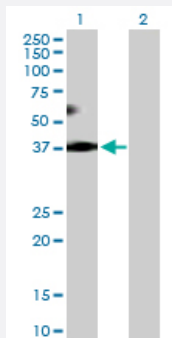
Size 100 uL

Applications



SDS-PAGE Gel

EIF2S1 transfected lysate.



Western Blot

Lane 1: EIF2S1 transfected lysate (36.10 KDa)

Lane 2: Non-transfected lysate.

Specification

Transfected Cell Line	293T
Plasmid	pCMV-EIF2S1 full-length
Host	Human
Theoretical MW (kDa)	36.1
Interspecies Antigen Sequence	Mouse (99); Rat (99)

Quality Control Testing

Transient overexpression cell lysate was tested with Anti-EIF2S1 antibody ([H00001965-D01P](#)) by Western Blots.
SDS-PAGE Gel
EIF2S1 transfected lysate.
Western Blot
Lane 1: EIF2S1 transfected lysate (36.10 KDa)
Lane 2: Non-transfected lysate.

Storage Buffer

1X Sample Buffer (50 mM Tris-HCl, 2% SDS, 10% glycerol, 300 mM 2-mercaptoethanol, 0.01% Bromophenol blue)

Storage Instruction

Store at -80°C. Aliquot to avoid repeated freezing and thawing.

Applications

- Western Blot

Gene Info — EIF2S1

Entrez GeneID[1965](#)**GeneBank Accession#**[NM_004094](#)**Protein Accession#**[NP_004085.1](#)**Gene Name**

EIF2S1

Gene Alias

EIF-2, EIF-2A, EIF-2alpha, EIF2, EIF2A

Gene Description

eukaryotic translation initiation factor 2, subunit 1 alpha, 35kDa

Omim ID[603907](#)**Gene Ontology**[Hyperlink](#)**Gene Summary**

The translation initiation factor eIF2 catalyzes the first regulated step of protein synthesis initiation, promoting the binding of the initiator tRNA to 40S ribosomal subunits. Binding occurs as a ternary complex of methionyl-tRNA, eIF2, and GTP. eIF2 is composed of 3 nonidentical subunits, alpha (36 kD), beta (38 kD, MIM 603908), and gamma (52 kD, MIM 300161). The rate of formation of the ternary complex is modulated by the phosphorylation state of eIF2-alpha (Ernst et al., 1987 [PubMed 2948954]).[supplied by OMIM]

Other Designations

eIF-2-alpha|eukaryotic translation initiation factor 2, subunit 1 (alpha, 35kD)

Disease

- [Hepatitis B](#)