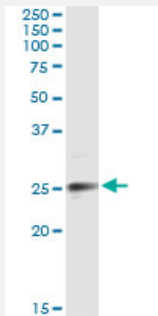


EFNA3 (Human) IP-WB Antibody Pair

Catalog # H00001944-PW2

Size 1 Set

Applications



Immunoprecipitation of EFNA3 transfected lysate using mouse monoclonal anti-EFNA3 and Protein A Magnetic Bead ([U0007](#)), and immunoblotted with rabbit polyclonal anti-EFNA3.

Specification

Product Description	This IP-WB antibody pair set comes with one antibody for immunoprecipitation and another to detect the precipitated protein in western blot.
Reactivity	Human
Quality Control Testing	Immunoprecipitation-Western Blot (IP-WB) Immunoprecipitation of EFNA3 transfected lysate using mouse monoclonal anti-EFNA3 and Protein A Magnetic Bead (U0007), and immunoblotted with rabbit polyclonal anti-EFNA3.
Supplied Product	Antibody pair set content: 1. Antibody pair for IP: mouse monoclonal anti-EFNA3 (300 ug) 2. Antibody pair for WB: rabbit polyclonal anti-EFNA3 (50 ul)
Storage Instruction	Store reagents of the antibody pair set at -20°C or lower. Please aliquot to avoid repeated freeze thaw cycle. Reagents should be returned to -20°C storage immediately after use.

Applications

- Immunoprecipitation-Western Blot

[Protocol Download](#)

Gene Info — EFNA3

Entrez GeneID [1944](#)

Gene Name EFNA3

Gene Alias EFL2, EPLG3, Ehk1-L, LERK3

Gene Description ephrin-A3

Omim ID [601381](#)

Gene Ontology [Hyperlink](#)

Gene Summary This gene encodes a member of the ephrin (EPH) family. The ephrins and EPH-related receptors comprise the largest subfamily of receptor protein-tyrosine kinases and have been implicated in mediating developmental events, especially in the nervous system and in erythropoiesis. Based on their structures and sequence relationships, ephrins are divided into the ephrin-A (EFNA) class, which are anchored to the membrane by a glycosylphosphatidylinositol linkage, and the ephrin-B (EFNB) class, which are transmembrane proteins. This gene encodes an EFNA class ephrin. [provided by RefSeq]

Other Designations OTTHUMP00000033243|eph-related receptor tyrosine kinase ligand 3|ephrin A3|ligand of eph-related kinase 3

Pathway

- [Axon guidance](#)

Disease

- [Alzheimer disease](#)
- [Cerebral Amyloid Angiopathy](#)
- [Genetic Predisposition to Disease](#)
- [Neuroblastoma](#)