

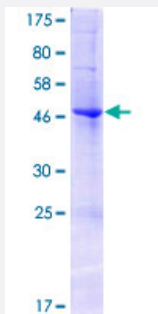
Full-Length

EFNA2 (Human) Recombinant Protein (P01)

Catalog # H00001943-P01

Size 25 ug, 10 ug

Applications



Specification

Product Description

Human EFNA2 full-length ORF (AA48728.1, 1 a.a. - 213 a.a.) recombinant protein with GST-tag at N-terminal.

Sequence

MAPAQRPLLPLLLLLPLPPPPFARAEDAARANS DRYAVYWNRSNPRFHAGAGDDGGGYTVEVS
INDYLDIYCPHYGAPLPPAERMEHYLYMVNGEGHASC DHRQRGFKRWE CNRPAAPGGPLKFSE
KFQLFTPFSLGFEFRPGHEYYISATPPNAVDRPCLRLKVYVRPTNETLYEAPEPIFTSNNSCSSPG
GCRLFLSTIPVLWTLGS

Host

Wheat Germ (in vitro)

Theoretical MW (kDa)

50.38

Interspecies Antigen Sequence

Mouse (91); Rat (91)

Preparation Method

[in vitro wheat germ expression system](#)

Purification

Glutathione Sepharose 4 Fast Flow

Quality Control Testing

12.5% SDS-PAGE Stained with Coomassie Blue.

Storage Buffer

50 mM Tris-HCl, 10 mM reduced Glutathione, pH=8.0 in the elution buffer.

Storage Instruction

Store at -80°C. Aliquot to avoid repeated freezing and thawing.

Note

Best use within three months from the date of receipt of this protein.

Applications

- Enzyme-linked Immunoabsorbent Assay
- Western Blot (Recombinant protein)
- Antibody Production
- Protein Array

Gene Info — EFNA2

Entrez GeneID [1943](#)

GeneBank Accession# [BC148727](#)

Protein Accession# [AA48728.1](#)

Gene Name EFNA2

Gene Alias ELF-1, EPLG6, HEK7-L, LERK6

Gene Description ephrin-A2

Omim ID [602756](#)

Gene Ontology [Hyperlink](#)

Gene Summary This gene encodes a member of the ephrin family. The protein is composed of a signal sequence , a receptor-binding region, a spacer region, and a hydrophobic region. The EPH and EPH-related receptors comprise the largest subfamily of receptor protein-tyrosine kinases and have been implicated in mediating developmental events, particularly in the nervous system. Based on their structures and sequence relationships, ephrins are divided into the ephrin-A (EFNA) class, which are anchored to the membrane by a glycosylphosphatidylinositol linkage, and the ephrin-B (EFNB) class, which are transmembrane proteins. Posttranslational modifications determine whether this protein localizes to the nucleus or the cytoplasm. [provided by RefSeq]

Other Designations HEK7-ligand|eph-related receptor tyrosine kinase ligand 6|ligand of eph-related kinase 6

Pathway

- [Axon guidance](#)