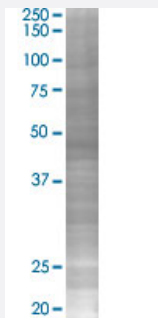


EEF1G 293T Cell Transient Overexpression Lysate(Denatured)

Catalog # H00001937-T02

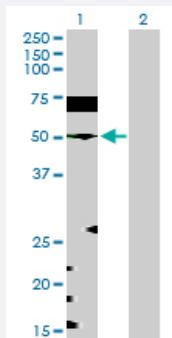
Size 100 uL

Applications



SDS-PAGE Gel

EEF1G transfected lysate.



Western Blot

Lane 1: EEF1G transfected lysate (48.18 KDa)

Lane 2: Non-transfected lysate.

Specification

Transfected Cell Line 293T

Plasmid pCMV-EEF1G full-length

Host Human

Theoretical MW (kDa) 50.1

Quality Control Testing Transient overexpression cell lysate was tested with Anti-EEF1G antibody ([H00001937-D01P](#)) by Western Blots.
SDS-PAGE Gel
EEF1G transfected lysate.
Western Blot
Lane 1: EEF1G transfected lysate (48.18 KDa)
Lane 2: Non-transfected lysate.

Storage Buffer

1X Sample Buffer (50 mM Tris-HCl, 2% SDS, 10% glycerol, 300 mM 2-mercaptoethanol, 0.01% Bromophenol blue)

Storage Instruction

Store at -80°C. Aliquot to avoid repeated freezing and thawing.

Applications

- Western Blot

Gene Info — EEF1G

Entrez GeneID[1937](#)**GeneBank Accession#**[NM_001404](#)**Protein Accession#**[NP_001395.1](#)**Gene Name**

EEF1G

Gene Alias

EF1G, GIG35

Gene Description

eukaryotic translation elongation factor 1 gamma

Omim ID[130593](#)**Gene Ontology**[Hyperlink](#)**Gene Summary**

This gene encodes a subunit of the elongation factor-1 complex, which is responsible for the enzymatic delivery of aminoacyl tRNAs to the ribosome. This subunit contains an N-terminal glutathione transferase domain, which may be involved in regulating the assembly of multisubunit complexes containing this elongation factor and aminoacyl-tRNA synthetases. [provided by RefSeq]

Other Designations

EF-1-gamma|PRO1608|eEF-1B gamma|elongation factor 1-gamma|pancreatic tumor-related protein|translation elongation factor eEF-1 gamma chain