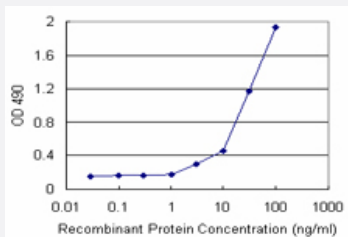


# EEF1G (Human) Matched Antibody Pair

Catalog # H00001937-AP21

Size 1 Set

## Applications



Sandwich ELISA detection sensitivity ranging from 3 ng/ml to 100 ng/ml.

## Specification

<b>Product Description</b>	This antibody pair set comes with a matched antibody pair to detect and quantify the protein level of human EEF1G.
<b>Reactivity</b>	Human
<b>Quality Control Testing</b>	Standard curve using recombinant protein ( H00001937-P01 ) as an analyte. Sandwich ELISA detection sensitivity ranging from 3 ng/ml to 100 ng/ml.
<b>Supplied Product</b>	Antibody pair set content: 1. Capture antibody: rabbit MaxPab® affinity purified polyclonal anti-EEF1G (100 ug) 2. Detection antibody: mouse polyclonal anti-EEF1G (40 ul) *Reagents are sufficient for at least 3-5 x 96 well plates using recommended protocols.
<b>Storage Instruction</b>	Store reagents of the antibody pair set at -20°C or lower. Please aliquot to avoid repeated freeze thaw cycle. Reagents should be returned to -20°C storage immediately after use.

## Applications

- ELISA Pair (Recombinant protein)

[Protocol Download](#)

## Gene Info — EEF1G

**Entrez GeneID** [1937](#)**Gene Name** EEF1G**Gene Alias** EF1G, GIG35**Gene Description** eukaryotic translation elongation factor 1 gamma**Omim ID** [130593](#)**Gene Ontology** [Hyperlink](#)

**Gene Summary** This gene encodes a subunit of the elongation factor-1 complex, which is responsible for the enzymatic delivery of aminoacyl tRNAs to the ribosome. This subunit contains an N-terminal glutathione transferase domain, which may be involved in regulating the assembly of multisubunit complexes containing this elongation factor and aminoacyl-tRNA synthetases. [provided by RefSeq]

**Other Designations** EF-1-gamma|PRO1608|eEF-1B gamma|elongation factor 1-gamma|pancreatic tumor-related protein|translation elongation factor eEF-1 gamma chain