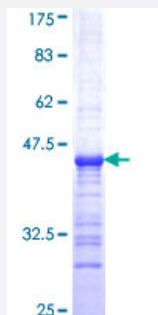


# EEF1D (Human) Recombinant Protein (Q01)

Catalog # H00001936-Q01

Size 25 ug, 10 ug

## Applications



## Specification

<b>Product Description</b>	Human EEF1D partial ORF ( NP_115754, 1 a.a. - 91 a.a.) recombinant protein with GST-tag at N-terminal.
<b>Sequence</b>	MRSGKASCTLETVWEDKHKYEEAERRFYEHQAAASAQQLPAEGPAMNGPGQDDPEDADE AEAPDGGSRDPKRSQDSRKPLQKKRKRS
<b>Host</b>	Wheat Germ (in vitro)
<b>Theoretical MW (kDa)</b>	35.75
<b>Preparation Method</b>	<a href="#">in vitro wheat germ expression system</a>
<b>Purification</b>	Glutathione Sepharose 4 Fast Flow
<b>Quality Control Testing</b>	12.5% SDS-PAGE Stained with Coomassie Blue.
<b>Storage Buffer</b>	50 mM Tris-HCl, 10 mM reduced Glutathione, pH=8.0 in the elution buffer.
<b>Storage Instruction</b>	Store at -80°C. Aliquot to avoid repeated freezing and thawing.
<b>Note</b>	Best use within three months from the date of receipt of this protein.

## Applications

- Enzyme-linked Immunoabsorbent Assay
- Western Blot (Recombinant protein)
- Antibody Production
- Protein Array

## Gene Info — EEF1D

**Entrez GeneID** [1936](#)

**GeneBank Accession#** [NM\\_032378](#)

**Protein Accession#** [NP\\_115754](#)

**Gene Name** EEF1D

**Gene Alias** EF-1D, EF1D, FLJ20897, FP1047

**Gene Description** eukaryotic translation elongation factor 1 delta (guanine nucleotide exchange protein)

**Omim ID** [130592](#)

**Gene Ontology** [Hyperlink](#)

**Gene Summary** This gene encodes a subunit of the elongation factor-1 complex, which is responsible for the enzymatic delivery of aminoacyl tRNAs to the ribosome. This subunit functions as guanine nucleotide exchange factor. It is reported that this subunit interacts with HIV-1 Tat, and thus it represses the translation of host-cell, but not HIV-1, mRNAs. Several alternatively spliced transcript variants encoding multiple isoforms have been found for this gene. [provided by RefSeq]

**Other Designations** antigen NY-CO-4|eukaryotic translation elongation factor 1 delta|guanine nucleotide exchange protein