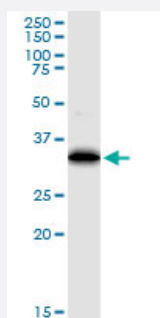


# EEF1D monoclonal antibody (M04), clone 4B12

Catalog # H00001936-M04

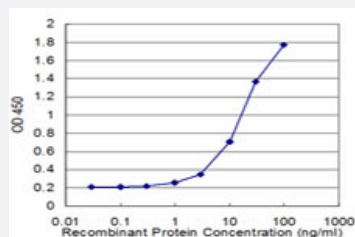
Size 100 ug

## Applications



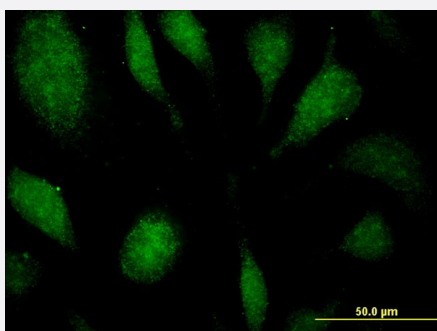
### Western Blot (Tissue lysate)

EEF1D monoclonal antibody (M04), clone 4B12. Western Blot analysis of EEF1D expression in human pancreas.



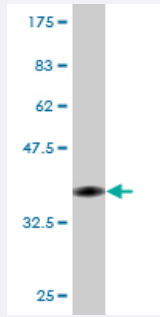
### Sandwich ELISA (Recombinant protein)

Detection limit for recombinant GST tagged EEF1D is approximately 1ng/ml as a capture antibody.



### Immunofluorescence

Immunofluorescence of monoclonal antibody to EEF1D on HeLa cell . [antibody concentration 10 ug/ml]



Western Blot detection against Immunogen (35.75 KDa) .

## Specification

<b>Product Description</b>	Mouse monoclonal antibody raised against a partial recombinant EEF1D.
<b>Immunogen</b>	EEF1D (NP_115754, 1 a.a. ~ 91 a.a) partial recombinant protein with GST tag. MW of the GST tag alone is 26 KDa.
<b>Sequence</b>	MRSGKASCTLETVWEDKHKYEEAERRFYEHETQAAASAAQLPAEGPAMNGPGQDDPEDADE AEAPDGGSRRDPRKSQDSRKPLQKKRKRS
<b>Host</b>	Mouse
<b>Reactivity</b>	Human
<b>Isotype</b>	IgG2a Kappa
<b>Quality Control Testing</b>	Antibody Reactive Against Recombinant Protein. Western Blot detection against Immunogen (35.75 KDa) .
<b>Storage Buffer</b>	In 1x PBS, pH 7.4
<b>Storage Instruction</b>	Store at -20°C or lower. Aliquot to avoid repeated freezing and thawing.

## Applications

- Western Blot (Tissue lysate)

EEF1D monoclonal antibody (M04), clone 4B12. Western Blot analysis of EEF1D expression in human pancreas.

[Protocol Download](#)

- Western Blot (Recombinant protein)

[Protocol Download](#)

- Sandwich ELISA (Recombinant protein)

Detection limit for recombinant GST tagged EEF1D is approximately 1ng/ml as a capture antibody.

[Protocol Download](#)

- ELISA

- Immunofluorescence

Immunofluorescence of monoclonal antibody to EEF1D on HeLa cell . [antibody concentration 10 ug/ml]

## Gene Info — EEF1D

Entrez GeneID	<a href="#">1936</a>
---------------	----------------------

GeneBank Accession#	<a href="#">NM_032378</a>
---------------------	---------------------------

Protein Accession#	<a href="#">NP_115754</a>
--------------------	---------------------------

Gene Name	EEF1D
-----------	-------

Gene Alias	EF-1D, EF1D, FLJ20897, FP1047
------------	-------------------------------

Gene Description	eukaryotic translation elongation factor 1 delta (guanine nucleotide exchange protein)
------------------	--

Omim ID	<a href="#">130592</a>
---------	------------------------

Gene Ontology	<a href="#">Hyperlink</a>
---------------	---------------------------

Gene Summary	This gene encodes a subunit of the elongation factor-1 complex, which is responsible for the enzymatic delivery of aminoacyl tRNAs to the ribosome. This subunit functions as guanine nucleotide exchange factor. It is reported that this subunit interacts with HIV-1 Tat, and thus it represses the translation of host-cell, but not HIV-1, mRNAs. Several alternatively spliced transcript variants encoding multiple isoforms have been found for this gene. [provided by RefSeq]
--------------	---

Other Designations	antigen NY-CO-4 eukaryotic translation elongation factor 1 delta guanine nucleotide exchange protein
--------------------	--