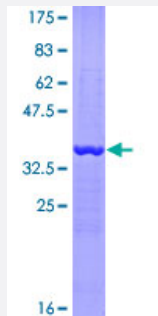


EEF1A2 (Human) Recombinant Protein (Q01)

Catalog # H00001917-Q01

Size 25 ug, 10 ug

Applications



Specification

Product Description	Human EEF1A2 partial ORF (NP_001949, 364 a.a. - 462 a.a.) recombinant protein with GST-tag at N-terminal.
Sequence	HTAHACKFAELKEKIDRRSGKKLEDNPKSLKSGDAANEMVPGKPMCVESFSQYPPLGRFAVRD MRQTVAVGVIKNVEKKSGGAGKVTKSAQKAQKAG
Host	Wheat Germ (in vitro)
Theoretical MW (kDa)	36.63
Interspecies Antigen Sequence	Mouse (100); Rat (100)
Preparation Method	in vitro wheat germ expression system
Purification	Glutathione Sepharose 4 Fast Flow
Quality Control Testing	12.5% SDS-PAGE Stained with Coomassie Blue.
Storage Buffer	50 mM Tris-HCl, 10 mM reduced Glutathione, pH=8.0 in the elution buffer.
Storage Instruction	Store at -80°C. Aliquot to avoid repeated freezing and thawing.
Note	Best use within three months from the date of receipt of this protein.

Applications

- Enzyme-linked Immunoabsorbent Assay
- Western Blot (Recombinant protein)
- Antibody Production
- Protein Array

Gene Info — EEF1A2

Entrez GeneID [1917](#)

GeneBank Accession# [NM_001958](#)

Protein Accession# [NP_001949](#)

Gene Name EEF1A2

Gene Alias EEF1AL, EF-1-alpha-2, EF1A, FLJ41696, HS1, STN, STNL

Gene Description eukaryotic translation elongation factor 1 alpha 2

Omim ID [602959](#)

Gene Ontology [Hyperlink](#)

Gene Summary This gene encodes an isoform of the alpha subunit of the elongation factor-1 complex, which is responsible for the enzymatic delivery of aminoacyl tRNAs to the ribosome. This isoform (alpha 2) is expressed in brain, heart and skeletal muscle, and the other isoform (alpha 1) is expressed in brain, placenta, lung, liver, kidney, and pancreas. This gene may be critical in the development of ovarian cancer. Alternatively spliced transcript variants encoding different isoforms have been found for this gene. [provided by RefSeq]

Other Designations OTTHUMP00000031776|elongation factor 1-alpha 2|elongation factor-1 alpha|statin S1|statin-like