

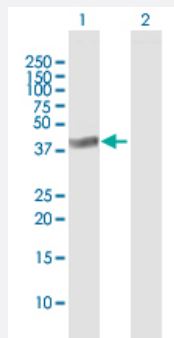
MaxPab®

PHC2 purified MaxPab mouse polyclonal antibody (B01P)

Catalog # H00001912-B01P

Size 50 ug

Applications



Western Blot (Transfected lysate)

Western Blot analysis of PHC2 expression in transfected 293T cell line ([H00001912-T01](#)) by PHC2 MaxPab polyclonal antibody.

Lane 1: PHC2 transfected lysate(35.53 KDa).

Lane 2: Non-transfected lysate.

Specification

Product Description	Mouse polyclonal antibody raised against a full-length human PHC2 protein.
Immunogen	PHC2 (NP_004418.2, 1 a.a. ~ 323 a.a) full-length human protein.
Sequence	MTSGNGNSASSIAGTAPQNGENKPPQAVKPQLTHVIEGFVIQEGAEPFPVGRSSLLVGNLKKKY AQGFLPEKLPQQDHTTTTDSMEEPYLQESKEEGAPLKLKCELCGRVDFAYKFKRSKRFCMA CAKRYNVGCTKRVGLFHSDRSKLQKAGAATHNRRRASKASLPPLTKDTKKQPTGTVPLSVTAAL QLTHSQEDSSRCSNDSSYEEPLSPISASSSTSRRRQGQRDLELPDMHMRDLVGMGHHFLPSEP TKWNVEDVYEFIRSLPGCQEI AEEFRAQEIDGQALLLLKEDHLMSAMNIKLGPAIKIYARISMLKDS
Host	Mouse
Reactivity	Human
Interspecies Antigen Sequence	Mouse (97); Rat (98)
Quality Control Testing	Antibody reactive against mammalian transfected lysate.
Storage Buffer	In 1x PBS, pH 7.4
Storage Instruction	Store at -20°C or lower. Aliquot to avoid repeated freezing and thawing.

Applications

- Western Blot (Transfected lysate)

Western Blot analysis of PHC2 expression in transfected 293T cell line ([H00001912-T01](#)) by PHC2 MaxPab polyclonal antibody.

Lane 1: PHC2 transfected lysate(35.53 KDa).

Lane 2: Non-transfected lysate.

[Protocol Download](#)

Gene Info — PHC2

Entrez GeneID [1912](#)

GeneBank Accession# [NM_004427](#)

Protein Accession# [NP_004418.2](#)

Gene Name PHC2

Gene Alias EDR2, HPH2, MGC163502, PH2

Gene Description polyhomeotic homolog 2 (Drosophila)

Omim ID [602979](#)

Gene Ontology [Hyperlink](#)

Gene Summary In Drosophila melanogaster, the 'Polycomb' group (PcG) of genes are part of a cellular memory system that is responsible for the stable inheritance of gene activity. PcG proteins form a large multimeric, chromatin-associated protein complex. The protein encoded by this gene has homology to the Drosophila PcG protein 'polyhomeotic' (Ph) and is known to heterodimerize with EDR1 and colocalize with BMI1 in interphase nuclei of human cells. The specific function in human cells has not yet been determined. Two transcript variants encoding different isoforms have been found for this gene. [provided by RefSeq]

Other Designations OTTHUMP00000004292|OTTHUMP00000004294|early development regulator 2 (homolog of polyhomeotic 2)|early development regulator 2-like|polyhomeotic 2|polyhomeotic-like 2

Disease

- [Tobacco Use Disorder](#)