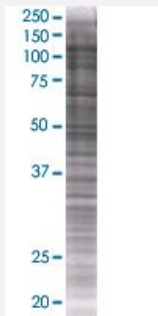


PHC1 293T Cell Transient Overexpression Lysate(Denatured)

Catalog # H00001911-T01

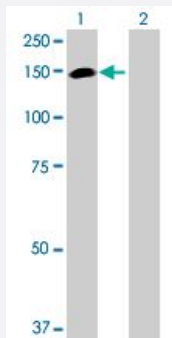
Size 100 uL

Applications



SDS-PAGE Gel

PHC1 transfected lysate.



Western Blot

Lane 1: PHC1 transfected lysate (100.2 KDa)

Lane 2: Non-transfected lysate.

Specification

Transfected Cell Line 293T

Plasmid pCMV-PHC1 full-length

Host Human

Theoretical MW (kDa) 100.2

Quality Control Testing Transient overexpression cell lysate was tested with Anti-PHC1 antibody ([H00001911-B01](#)) by Western Blots.
 SDS-PAGE Gel
 PHC1 transfected lysate.
 Western Blot
 Lane 1: PHC1 transfected lysate (100.2 KDa)
 Lane 2: Non-transfected lysate.

Storage Buffer

1X Sample Buffer (50 mM Tris-HCl, 2% SDS, 10% glycerol, 300 mM 2-mercaptoethanol, 0.01% Bromophenol blue)

Storage Instruction

Store at -80°C. Aliquot to avoid repeated freezing and thawing.

Applications

- Western Blot

Gene Info — PHC1

Entrez GeneID[1911](#)**GeneBank Accession#**[BC073964](#)**Protein Accession#**[AAH73964](#)**Gene Name**

PHC1

Gene Alias

EDR1, HPH1, RAE28

Gene Description

polyhomeotic homolog 1 (Drosophila)

Omim ID[602978](#)**Gene Ontology**[Hyperlink](#)**Gene Summary**

This gene is a homolog of the Drosophila polyhomeotic gene, which is a member of the Polycomb group of genes. The gene product is a component of a multimeric protein complex that contains EDR2 and the vertebrate Polycomb protein BMH1. The gene product, the EDR2 protein, and the Drosophila polyhomeotic protein share 2 highly conserved domains, named homology domains I and II. These domains are involved in protein-protein interactions and may mediate heterodimerization of the protein encoded by this gene and the EDR2 protein. [provided by RefSeq]

Other Designations

Rae28-like|early development regulator 1 (homolog of polyhomeotic 1)|polyhomeotic 1-like|polyhomeotic-like 1