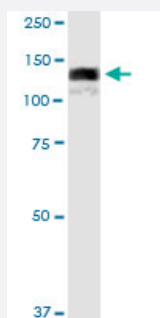


PHC1 (Human) IP-WB Antibody Pair

Catalog # H00001911-PW2

Size 1 Set

Applications



Immunoprecipitation of PHC1 transfected lysate using rabbit polyclonal anti-PHC1 and Protein A Magnetic Bead ([U0007](#)), and immunoblotted with mouse purified polyclonal anti-PHC1.

Specification

Product Description	This IP-WB antibody pair set comes with one antibody for immunoprecipitation and another to detect the precipitated protein in western blot.
Reactivity	Human
Quality Control Testing	Immunoprecipitation-Western Blot (IP-WB) Immunoprecipitation of PHC1 transfected lysate using rabbit polyclonal anti-PHC1 and Protein A Magnetic Bead (U0007), and immunoblotted with mouse purified polyclonal anti-PHC1.
Supplied Product	Antibody pair set content: 1. Antibody pair for IP: rabbit polyclonal anti-PHC1 (300 ul) 2. Antibody pair for WB: mouse purified polyclonal anti-PHC1 (50 ug)
Storage Instruction	Store reagents of the antibody pair set at -20°C or lower. Please aliquot to avoid repeated freeze thaw cycle. Reagents should be returned to -20°C storage immediately after use.

Applications

- Immunoprecipitation-Western Blot

[Protocol Download](#)

Gene Info — PHC1

Entrez GeneID [1911](#)**Gene Name** PHC1**Gene Alias** EDR1, HPH1, RAE28**Gene Description** polyhomeotic homolog 1 (Drosophila)**Omim ID** [602978](#)**Gene Ontology** [Hyperlink](#)

Gene Summary This gene is a homolog of the Drosophila polyhomeotic gene, which is a member of the Polycomb group of genes. The gene product is a component of a multimeric protein complex that contains EDR2 and the vertebrate Polycomb protein BMH1. The gene product, the EDR2 protein, and the Drosophila polyhomeotic protein share 2 highly conserved domains, named homology domains I and II. These domains are involved in protein-protein interactions and may mediate heterodimerization of the protein encoded by this gene and the EDR2 protein. [provided by RefSeq]

Other Designations Rae28-like|early development regulator 1 (homolog of polyhomeotic 1)|polyhomeotic 1-like|polyhomeotic-like 1