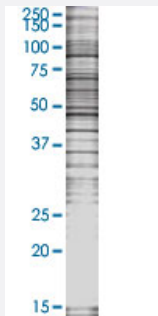


# EBI2 293T Cell Transient Overexpression Lysate(Denatured)

Catalog # H00001880-T04

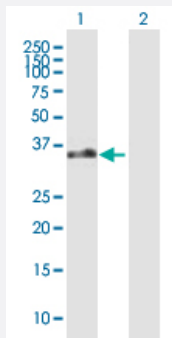
Size 100 uL

## Applications



### SDS-PAGE Gel

EBI2 transfected lysate.



### Western Blot

Lane 1: EBI2 transfected lysate ( 39.82 KDa)

Lane 2: Non-transfected lysate.

## Specification

|                               |                       |
|-------------------------------|-----------------------|
| Transfected Cell Line         | 293T                  |
| Plasmid                       | pCMV-EBI2 full-length |
| Host                          | Human                 |
| Theoretical MW (kDa)          | 39.82                 |
| Interspecies Antigen Sequence | Mouse (88); Rat (88)  |

#### Quality Control Testing

Transient overexpression cell lysate was tested with Anti-EBI2 antibody ([H00001880-B01P](#)) by Western Blots.  
 SDS-PAGE Gel  
 EBI2 transfected lysate.  
 Western Blot  
 Lane 1: EBI2 transfected lysate ( 39.82 KDa)  
 Lane 2: Non-transfected lysate.

#### Storage Buffer

1X Sample Buffer (50 mM Tris-HCl, 2% SDS, 10% glycerol, 300 mM 2-mercaptoethanol, 0.01% Bromophenol blue)

#### Storage Instruction

Store at -80°C. Aliquot to avoid repeated freezing and thawing.

## Applications

- Western Blot

## Gene Info — GPR183

#### Entrez GeneID

[1880](#)

#### GeneBank Accession#

[BC020752](#)

#### Protein Accession#

[AAH20752](#)

#### Gene Name

GPR183

#### Gene Alias

EBI2

#### Gene Description

G protein-coupled receptor 183

#### Omim ID

[605741](#)

#### Gene Ontology

[Hyperlink](#)

#### Gene Summary

This gene was identified by the up-regulation of its expression upon Epstein-Barr virus infection of primary B lymphocytes. This gene is predicted to encode a G protein-coupled receptor that is most closely related to the thrombin receptor. Expression of this gene was detected in B-lymphocyte cell lines and lymphoid tissues but not in T-lymphocyte cell lines or peripheral blood T lymphocytes. The function of this gene is unknown. [provided by RefSeq]

#### Other Designations

EBV-induced G protein-coupled receptor 2|Epstein-Barr virus induced gene 2 (lymphocyte-specific G protein-coupled receptor)|OTTHUMP00000018611