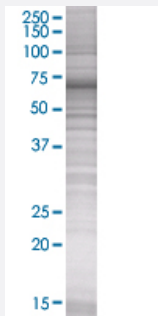


EBI2 293T Cell Transient Overexpression Lysate(Denatured)

Catalog # H00001880-T01

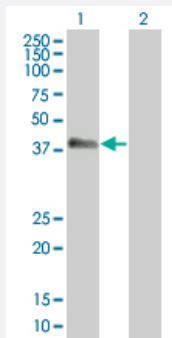
Size 100 uL

Applications



SDS-PAGE Gel

EBI2 transfected lysate



Western Blot

Lane 1: EBI2 transfected lysate (39.82 KDa).

Lane 2: Non-transfected lysate.

Specification

Transfected Cell Line	293T
Plasmid	pCMV-EBI2 full-length
Host	Human
Theoretical MW (kDa)	39.82
Interspecies Antigen Sequence	Mouse (88); Rat (88)

Quality Control Testing

Transient overexpression cell lysate was tested with Anti-EBI2 antibody ([H00001880-B01](#)) by Western Blots.

SDS-PAGE Gel

EBI2 transfected lysate

Western Blot

Lane 1: EBI2 transfected lysate (39.82 KDa).

Lane 2: Non-transfected lysate.

Storage Buffer

1X Sample Buffer (50 mM Tris-HCl, 2% SDS, 10% glycerol, 300 mM 2-mercaptoethanol, 0.01% Bromophenol blue)

Storage Instruction

Store at -80°C. Aliquot to avoid repeated freezing and thawing.

Applications

- Western Blot

Gene Info — GPR183

Entrez GeneID

[1880](#)

GeneBank Accession#

[BC020752](#)

Protein Accession#

[AAH20752](#)

Gene Name

GPR183

Gene Alias

EBI2

Gene Description

G protein-coupled receptor 183

Omim ID

[605741](#)

Gene Ontology

[Hyperlink](#)

Gene Summary

This gene was identified by the up-regulation of its expression upon Epstein-Barr virus infection of primary B lymphocytes. This gene is predicted to encode a G protein-coupled receptor that is most closely related to the thrombin receptor. Expression of this gene was detected in B-lymphocyte cell lines and lymphoid tissues but not in T-lymphocyte cell lines or peripheral blood T lymphocytes. The function of this gene is unknown. [provided by RefSeq]

Other Designations

EBV-induced G protein-coupled receptor 2|Epstein-Barr virus induced gene 2 (lymphocyte-specific G protein-coupled receptor)|OTTHUMP00000018611