

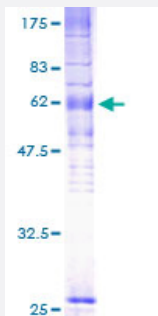
Full-Length

EBI2 (Human) Recombinant Protein (P01)

Catalog # H00001880-P01

Size 25 ug, 10 ug

Applications



Specification

Product Description

Human EBI2 full-length ORF (AAH20752, 1 a.a. - 361 a.a.) recombinant protein with GST-tag at N-terminal.

Sequence

MDIQMANNFTPPSATPQGND CDLYAAHSTARVMPLHYSLVFIIGLVGNLLALVVIVQNRKKINSTLLYSTNLVISDILFTTALPTRIAYYAMGFDWRIGDALCRITALVFYINTYAGVNFMTCLSIDRFIAVVHPLRYNKIKRIEHAKGVCIFVWILVFAQTLPLLINPMSKQEAERITCMEYPNFEETKSLPWILLGACFIGYVLP LIIICYSQICCKLFR TAKQNPLTEKSGVNKKALNTIILIVFVLCFTPYHVAIQHMIKKLRFSNFLECSQRHSFQISLHFTVCLMNFNCCMDPFYFFACKGYKRKVMRMLKRQVSVSISAVKSAPEENSREM TETQMMIHSKSSNGK

Host

Wheat Germ (in vitro)

Theoretical MW (kDa)

65.45

Interspecies Antigen Sequence

Mouse (88); Rat (88)

Preparation Method

[in vitro wheat germ expression system](#)

Purification

Glutathione Sepharose 4 Fast Flow

Quality Control Testing

12.5% SDS-PAGE Stained with Coomassie Blue.

Storage Buffer

50 mM Tris-HCl, 10 mM reduced Glutathione, pH=8.0 in the elution buffer.

Storage Instruction

Store at -80°C. Aliquot to avoid repeated freezing and thawing.

Note

Best use within three months from the date of receipt of this protein.

Applications

- Enzyme-linked Immunoabsorbent Assay
- Western Blot (Recombinant protein)
- Antibody Production
- Protein Array

Gene Info — GPR183

Entrez GeneID[1880](#)**GeneBank Accession#**[BC020752](#)**Protein Accession#**[AAH20752](#)**Gene Name**

GPR183

Gene Alias

EBI2

Gene Description

G protein-coupled receptor 183

Omim ID[605741](#)**Gene Ontology**[Hyperlink](#)**Gene Summary**

This gene was identified by the up-regulation of its expression upon Epstein-Barr virus infection of primary B lymphocytes. This gene is predicted to encode a G protein-coupled receptor that is most closely related to the thrombin receptor. Expression of this gene was detected in B-lymphocyte cell lines and lymphoid tissues but not in T-lymphocyte cell lines or peripheral blood T lymphocytes. The function of this gene is unknown. [provided by RefSeq]

Other Designations

EBV-induced G protein-coupled receptor 2|Epstein-Barr virus induced gene 2 (lymphocyte-specific G protein-coupled receptor)|OTTHUMP00000018611