

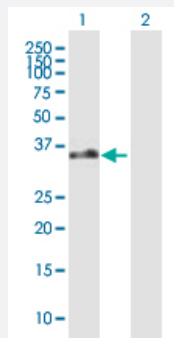
MaxPab®

EBI2 purified MaxPab mouse polyclonal antibody (B01P)

Catalog # H00001880-B01P

Size 50 ug

Applications



Western Blot (Transfected lysate)

Western Blot analysis of GPR183 expression in transfected 293T cell line ([H00001880-T04](#)) by GPR183 MaxPab polyclonal antibody.

Lane 1: EBI2 transfected lysate(39.82 KDa).

Lane 2: Non-transfected lysate.

Specification

Product Description

Mouse polyclonal antibody raised against a full-length human EBI2 protein.

Immunogen

EBI2 (AAH20752, 1 a.a. ~ 361 a.a) full-length human protein.

Sequence

MDIQMANNFTPPSATPQGNDLCDLYAAHSTARVMPLHYSLVFIIGLVGNLLALVVIVQNRKKINSTLLYSTNLVISDILFTTALPTRIAYYAMGFDWRIGDALCRITALVFYINTYAGVNFMTCLSIDRFIAVVHPLRYNKIKRIEHAKGVCIFVWILVFAQTLPLLINPMSKQEAERITCMEYPNFEETKSLPWILLGACFIGYVLP LIIILICYSQICCKLFRITAKQNPLTEKSGVNKKALNTIILIVFVLCFTPYHVAIQHMIKKLRFSNFLECSQRHSFQISLHFTVCLMNFCCMDPFIYFFACKGYKRKVMRMLKRQVSVSISAVKSAPEENSREM TETQMMIHSKSSNGK

Host

Mouse

Reactivity

Human

Interspecies Antigen Sequence

Mouse (88); Rat (88)

Quality Control Testing

Antibody reactive against mammalian transfected lysate.

Storage Buffer

In 1x PBS, pH 7.4

Storage Instruction

Store at -20°C or lower. Aliquot to avoid repeated freezing and thawing.

Applications

- Western Blot (Transfected lysate)

Western Blot analysis of GPR183 expression in transfected 293T cell line ([H00001880-T04](#)) by GPR183 MaxPab polyclonal antibody.

Lane 1: EB12 transfected lysate(39.82 KDa).

Lane 2: Non-transfected lysate.

[Protocol Download](#)

Gene Info — GPR183

Entrez GeneID [1880](#)

GeneBank Accession# [BC020752](#)

Protein Accession# [AAH20752](#)

Gene Name GPR183

Gene Alias EB12

Gene Description G protein-coupled receptor 183

Omim ID [605741](#)

Gene Ontology [Hyperlink](#)

Gene Summary This gene was identified by the up-regulation of its expression upon Epstein-Barr virus infection of primary B lymphocytes. This gene is predicted to encode a G protein-coupled receptor that is most closely related to the thrombin receptor. Expression of this gene was detected in B-lymphocyte cell lines and lymphoid tissues but not in T-lymphocyte cell lines or peripheral blood T lymphocytes. The function of this gene is unknown. [provided by RefSeq]

Other Designations EBV-induced G protein-coupled receptor 2|Epstein-Barr virus induced gene 2 (lymphocyte-specific G protein-coupled receptor)|OTTHUMP00000018611