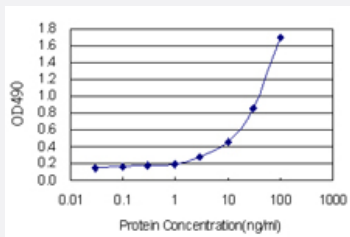


## E4F1 (Human) Matched Antibody Pair

Catalog # H00001877-AP11

Size 1 Set

### Applications



Sandwich ELISA detection sensitivity ranging from 1 ng/ml to 100 ng/ml.

### Specification

<b>Product Description</b>	This antibody pair set comes with a matched antibody pair to detect and quantify the protein level of human E4F1.
<b>Reactivity</b>	Human
<b>Quality Control Testing</b>	Standard curve using recombinant protein ( H00001877-P01 ) as an analyte. Sandwich ELISA detection sensitivity ranging from 1 ng/ml to 100 ng/ml.
<b>Supplied Product</b>	Antibody pair set content: 1. Capture antibody: rabbit MaxPab® affinity purified polyclonal anti-E4F1 (100 ug) 2. Detection antibody: mouse monoclonal anti-E4F1, IgG2a Kappa (20 ug) *Reagents are sufficient for at least 1-2 x 96 well plates using recommended protocols.
<b>Storage Instruction</b>	Store reagents of the antibody pair set at -20°C or lower. Please aliquot to avoid repeated freeze thaw cycle. Reagents should be returned to -20°C storage immediately after use.

### Applications

- ELISA Pair (Recombinant protein)

[Protocol Download](#)

## Gene Info — E4F1

**Entrez GeneID** [1877](#)**Gene Name** E4F1**Gene Alias** E4F, MGC99614**Gene Description** E4F transcription factor 1**Omim ID** [603022](#)**Gene Ontology** [Hyperlink](#)

**Gene Summary** The zinc finger protein encoded by this gene is one of several cellular transcription factors whose DNA-binding activities are regulated through the action of adenovirus E1A. A 50-kDa amino-terminal product is generated from the full-length protein through proteolytic cleavage. The protein is differentially regulated by E1A-induced phosphorylation. The full-length gene product represses transcription from the E4 promoter in the absence of E1A, while the 50-kDa form acts as a transcriptional activator in its presence. [provided by RefSeq]

**Other Designations** p120E4F