

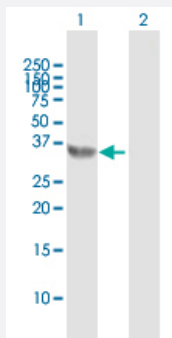
MaxPab®

E2F6 MaxPab rabbit polyclonal antibody (D01)

Catalog # H00001876-D01

Size 100 uL

Applications

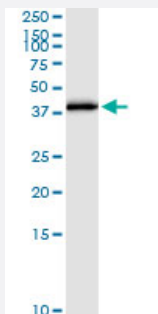


Western Blot (Transfected lysate)

Western Blot analysis of E2F6 expression in transfected 293T cell line ([H00001876-T02](#)) by E2F6 MaxPab polyclonal antibody.

Lane 1: E2F6 transfected lysate(31.8 KDa).

Lane 2: Non-transfected lysate.



Immunoprecipitation

Immunoprecipitation of E2F6 transfected lysate using anti-E2F6 MaxPab rabbit polyclonal antibody and Protein A Magnetic Bead, and immunoblotted with E2F6 MaxPab mouse polyclonal antibody (B01) ([H00001876-B01](#)).

Specification

Product Description

Rabbit polyclonal antibody raised against a full-length human E2F6 protein.

Immunogen

E2F6 (NP_937987.2, 1 a.a. ~ 281 a.a) full-length human protein.

Sequence

MSQQRPAKLPKSLLLDPTEETVRRRCRDPINVEGLLPKIRINLEDNVQYVSMRKALKVKRPRFDV
SLVYLTRKFMDLVRSAPEGGILDNLKVATKLGVRKRRVYDITNVLDGIDLVEKKSKNHIRWIGSDLSN
FGAVPQQKKLQEELSDLSAMEDALDELIKDCAQQLFELTDDKENERLAYVTYQDIHSIQAFHEQVI
AVKAPAETRLDPAPREDSTVHIRSTNGPIDVYLCEVEQGQTSNKRSEGVGTSSSESTHPEGPE
EEENPQQSEELLEVS

Host

Rabbit

Reactivity	Human
Interspecies Antigen Sequence	Mouse (87); Rat (88)
Quality Control Testing	Antibody reactive against mammalian transfected lysate.
Storage Buffer	No additive
Storage Instruction	Store at -20°C or lower. Aliquot to avoid repeated freezing and thawing.

Applications

- Western Blot (Transfected lysate)

Western Blot analysis of E2F6 expression in transfected 293T cell line ([H00001876-T02](#)) by E2F6 MaxPab polyclonal antibody.

Lane 1: E2F6 transfected lysate(31.8 KDa).

Lane 2: Non-transfected lysate.

[Protocol Download](#)

- Immunoprecipitation

Immunoprecipitation of E2F6 transfected lysate using anti-E2F6 MaxPab rabbit polyclonal antibody and Protein A Magnetic Bead, and immunoblotted with E2F6 MaxPab mouse polyclonal antibody (B01) ([H00001876-B01](#)).

[Protocol Download](#)

Gene Info — E2F6

Entrez GeneID	1876
GeneBank Accession#	NM_198256
Protein Accession#	NP_937987.2
Gene Name	E2F6
Gene Alias	E2F-6, MGC111545
Gene Description	E2F transcription factor 6
Omim ID	602944
Gene Ontology	Hyperlink

Gene Summary

This gene encodes a member of the E2F transcription factor protein family. E2F family members play a crucial role in control of the cell cycle and of the action of tumor suppressor proteins. They are also a target of the transforming proteins of small DNA tumor viruses. Many E2F proteins contain several evolutionarily conserved domains: a DNA binding domain, a dimerization domain which determines interaction with the differentiation regulated transcription factor proteins (DP), a transactivation domain enriched in acidic amino acids, and a tumor suppressor protein association domain which is embedded within the transactivation domain. The encoded protein of this gene is atypical because it lacks the transactivation and tumor suppressor protein association domains. It contains a modular suppression domain and is an inhibitor of E2F-dependent transcription. The protein is part of a multimeric protein complex that contains a histone methyltransferase and the transcription factors Mga and Max. Multiple transcript variants have been reported for this gene, but it has not been clearly demonstrated that they encode valid isoforms. [provided by RefSeq]

Other Designations

E2F transcription factor 6, isoform 1

Disease

- [Genetic Predisposition to Disease](#)
- [Ovarian Neoplasms](#)