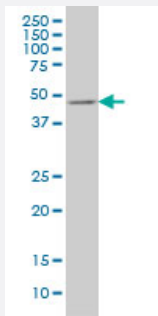


E2F3 monoclonal antibody (M01), clone 5F7

Catalog # H00001871-M01

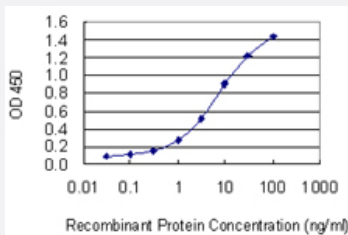
Size 100 ug

Applications



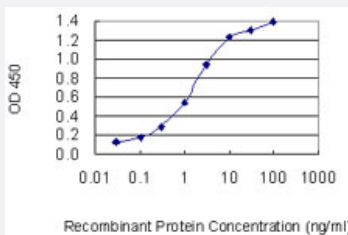
Western Blot (Cell lysate)

E2F3 monoclonal antibody (M01), clone 5F7 Western Blot analysis of E2F3 expression in COLO 320 HSR (Cat # L020V1).



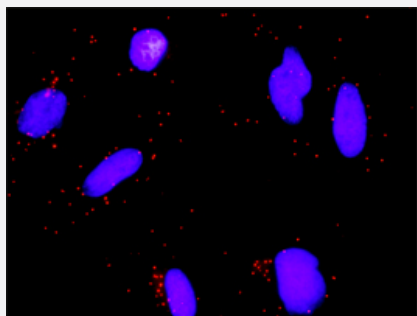
Sandwich ELISA (Recombinant protein)

Detection limit for recombinant GST tagged E2F3 is 0.1 ng/ml as a capture antibody.



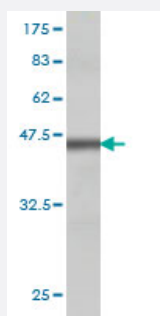
Sandwich ELISA (Recombinant protein)

Detection limit for recombinant GST tagged E2F3 is 0.03 ng/ml as a capture antibody.



In situ Proximity Ligation Assay (Cell)

Proximity Ligation Analysis of protein-protein interactions between MSH2 and E2F3. HeLa cells were stained with anti-MSH2 rabbit purified polyclonal 1:1200 and anti-E2F3 mouse monoclonal antibody 1:50. Each red dot represents the detection of protein-protein interaction complex, and nuclei were counterstained with DAPI (blue).



Western Blot detection against Immunogen (36.01 KDa) .

Specification

Product Description	Mouse monoclonal antibody raised against a partial recombinant E2F3.
Immunogen	E2F3 (NP_001940, 336 a.a. ~ 425 a.a) partial recombinant protein with GST tag. MW of the GST tag alone is 26 KDa.
Sequence	QIHLASTQGPIEVYLCPEETETHSPMKTNNQDHNGNIPKPASKDLASTNSGHSDCSVSMGNLSPL ASPANLLQQTEDQIPSNLEGPFVNL
Host	Mouse
Reactivity	Human
Isotype	IgG1 Kappa
Quality Control Testing	Antibody Reactive Against Recombinant Protein. Western Blot detection against Immunogen (36.01 KDa) .
Storage Buffer	In 1x PBS, pH 7.4
Storage Instruction	Store at -20°C or lower. Aliquot to avoid repeated freezing and thawing.

Applications

- Western Blot (Cell lysate)

E2F3 monoclonal antibody (M01), clone 5F7 Western Blot analysis of E2F3 expression in COLO 320 HSR (Cat # L020V1).

[Protocol Download](#)

- Western Blot (Recombinant protein)

[Protocol Download](#)

- Sandwich ELISA (Recombinant protein)

Detection limit for recombinant GST tagged E2F3 is 0.1 ng/ml as a capture antibody.

[Protocol Download](#)

- Sandwich ELISA (Recombinant protein)

Detection limit for recombinant GST tagged E2F3 is 0.03 ng/ml as a capture antibody.

[Protocol Download](#)

- ELISA

- In situ* Proximity Ligation Assay (Cell)

Proximity Ligation Analysis of protein-protein interactions between MSH2 and E2F3. HeLa cells were stained with anti-MSH2 rabbit purified polyclonal 1:1200 and anti-E2F3 mouse monoclonal antibody 1:50. Each red dot represents the detection of protein-protein interaction complex, and nuclei were counterstained with DAPI (blue).

Gene Info — E2F3

Entrez GeneID [1871](#)

GeneBank Accession# [NM_001949](#)

Protein Accession# [NP_001940](#)

Gene Name E2F3

Gene Alias DKFZp686C18211, E2F-3, KIAA0075, MGC104598

Gene Description E2F transcription factor 3

Omim ID [600427](#)

Gene Ontology [Hyperlink](#)

Gene Summary

The protein encoded by this gene is a member of the E2F family of transcription factors. The E2F family plays a crucial role in the control of cell cycle and action of tumor suppressor proteins and is also a target of the transforming proteins of small DNA tumor viruses. The E2F proteins contain several evolutionally conserved domains found in most members of the family. These domains include a DNA binding domain, a dimerization domain which determines interaction with the differentiation regulated transcription factor proteins (DP), a transactivation domain enriched in acidic amino acids, and a tumor suppressor protein association domain which is embedded within the transactivation domain. This protein and another 2 members, E2F1 and E2F2, have an additional cyclin binding domain. This protein binds specifically to retinoblastoma protein pRB in a cell-cycle dependent manner. [provided by RefSeq]

Other Designations

OTTHUMP00000018012

Pathway

- [Bladder cancer](#)
- [Cell cycle](#)
- [Chronic myeloid leukemia](#)
- [Glioma](#)
- [Melanoma](#)
- [Non-small cell lung cancer](#)
- [Pancreatic cancer](#)
- [Pathways in cancer](#)
- [Prostate cancer](#)
- [Small cell lung cancer](#)

Disease

- [Genetic Predisposition to Disease](#)
- [Ovarian Neoplasms](#)