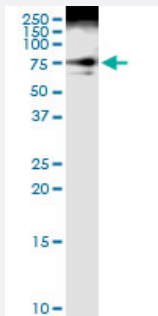


# DVL3 (Human) IP-WB Antibody Pair

Catalog # H00001857-PW1

Size 1 Set

## Applications



Immunoprecipitation of DVL3 transfected lysate using rabbit polyclonal anti-DVL3 and Protein A Magnetic Bead ([U0007](#)), and immunoblotted with mouse polyclonal anti-DVL3.

## Specification

<b>Product Description</b>	This IP-WB antibody pair set comes with one antibody for immunoprecipitation and another to detect the precipitated protein in western blot.
<b>Reactivity</b>	Human
<b>Quality Control Testing</b>	Immunoprecipitation-Western Blot (IP-WB) Immunoprecipitation of DVL3 transfected lysate using rabbit polyclonal anti-DVL3 and Protein A Magnetic Bead ( <a href="#">U0007</a> ), and immunoblotted with mouse polyclonal anti-DVL3.
<b>Supplied Product</b>	Antibody pair set content: 1. Antibody pair for IP: rabbit polyclonal anti-DVL3 (300 ul) 2. Antibody pair for WB: mouse polyclonal anti-DVL3 (50 ul)
<b>Storage Instruction</b>	Store reagents of the antibody pair set at -20°C or lower. Please aliquot to avoid repeated freeze thaw cycle. Reagents should be returned to -20°C storage immediately after use.

## Applications

- Immunoprecipitation-Western Blot

[Protocol Download](#)

## Gene Info — DVL3

Entrez GeneID	<a href="#">1857</a>
Gene Name	DVL3
Gene Alias	KIAA0208
Gene Description	dishevelled, dsh homolog 3 (Drosophila)
Omim ID	<a href="#">601368</a>
Gene Ontology	<a href="#">Hyperlink</a>
Gene Summary	This gene is a member of a multi-gene family which shares strong similarity with the Drosophila dishevelled gene, dsh. The Drosophila dishevelled gene encodes a cytoplasmic phosphoprotein that regulates cell proliferation. [provided by RefSeq]
Other Designations	dishevelled 3 dishevelled 3 (homologous to Drosophila dsh)

## Pathway

- [Basal cell carcinoma](#)
- [Colorectal cancer](#)
- [Melanogenesis](#)
- [Notch signaling pathway](#)
- [Pathways in cancer](#)
- [Wnt signaling pathway](#)