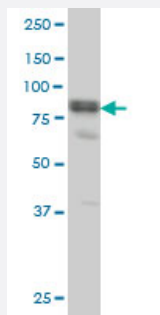


# DVL3 monoclonal antibody (M04), clone 4H2

Catalog # H00001857-M04

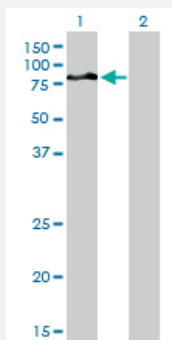
Size 50 ug

## Applications



### Western Blot (Cell lysate)

DVL3 monoclonal antibody (M04), clone 4H2 Western Blot analysis of DVL3 expression in A-431 ( Cat # L015V1 ).

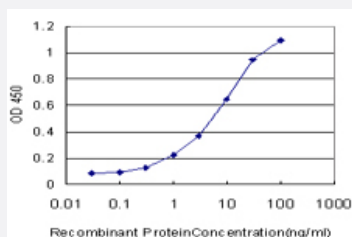


### Western Blot (Transfected lysate)

Western Blot analysis of DVL3 expression in transfected 293T cell line by DVL3 monoclonal antibody (M04), clone 4H2.

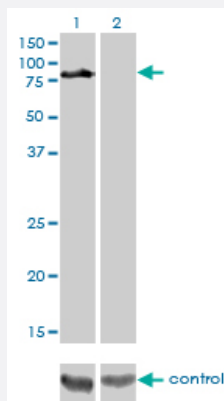
Lane 1: DVL3 transfected lysate(78 KDa).

Lane 2: Non-transfected lysate.



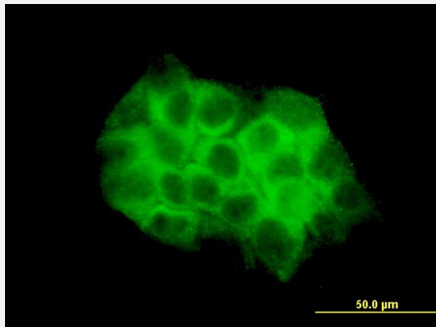
### Sandwich ELISA (Recombinant protein)

Detection limit for recombinant GST tagged DVL3 is approximately 0.3ng/ml as a capture antibody.



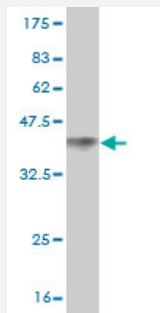
### RNAi Knockdown (Antibody validated)

Western blot analysis of DVL3 over-expressed 293 cell line, cotransfected with DVL3 Validated Chimera RNAi ( Cat # H00001857-R01V ) (Lane 2) or non-transfected control (Lane 1). Blot probed with DVL3 monoclonal antibody (M04), clone 4H2 (Cat # H00001857-M04 ). GAPDH ( 36.1 kDa ) used as specificity and loading control.



### Immunofluorescence

Immunofluorescence of monoclonal antibody to DVL3 on A-431 cell. [antibody concentration 10 ug/ml]



Western Blot detection against Immunogen (36.63 KDa) .

## Specification

Product Description	Mouse monoclonal antibody raised against a partial recombinant DVL3.
Immunogen	DVL3 (AAH32459, 1 a.a. ~ 100 a.a) partial recombinant protein with GST tag. MW of the GST tag alone is 26 KDa.
Sequence	MGETKIIYHLDGQETPYLVKLPLPAERVTLADFKGVLQRPSYKFFFKSMDDDFGVVKEEISDDNAK LPCFNGRVVS WLVS AEGSHDPAPFCADNPSELP
Host	Mouse
Reactivity	Human
Isotype	IgG1 Kappa

**Quality Control Testing**

Antibody Reactive Against Recombinant Protein.  
Western Blot detection against Immunogen (36.63 KDa) .

**Storage Buffer**

In 1x PBS, pH 7.4

**Storage Instruction**

Store at -20°C or lower. Aliquot to avoid repeated freezing and thawing.

## Applications

- Western Blot (Cell lysate)

DVL3 monoclonal antibody (M04), clone 4H2 Western Blot analysis of DVL3 expression in A-431 ( Cat # L015V1 ).

[Protocol Download](#)

- Western Blot (Transfected lysate)

Western Blot analysis of DVL3 expression in transfected 293T cell line by DVL3 monoclonal antibody (M04), clone 4H2.

Lane 1: DVL3 transfected lysate(78 KDa).

Lane 2: Non-transfected lysate.

[Protocol Download](#)

- Western Blot (Recombinant protein)

[Protocol Download](#)

- Sandwich ELISA (Recombinant protein)

Detection limit for recombinant GST tagged DVL3 is approximately 0.3ng/ml as a capture antibody.

[Protocol Download](#)

- ELISA

- RNAi Knockdown (Antibody validated)

Western blot analysis of DVL3 over-expressed 293 cell line, cotransfected with DVL3 Validated Chimera RNAi ( Cat # H00001857-R01V ) (Lane 2) or non-transfected control (Lane 1). Blot probed with DVL3 monoclonal antibody (M04), clone 4H2 (Cat # H00001857-M04 ). GAPDH ( 36.1 kDa ) used as specificity and loading control.

[Protocol Download](#)

- Immunofluorescence

Immunofluorescence of monoclonal antibody to DVL3 on A-431 cell. [antibody concentration 10 ug/ml]

## Gene Info — DVL3

Entrez GeneID	<a href="#">1857</a>
GeneBank Accession#	<a href="#">BC032459</a>
Protein Accession#	<a href="#">AAH32459</a>
Gene Name	DVL3
Gene Alias	KIAA0208
Gene Description	dishevelled, dsh homolog 3 (Drosophila)
Omim ID	<a href="#">601368</a>
Gene Ontology	<a href="#">Hyperlink</a>
Gene Summary	This gene is a member of a multi-gene family which shares strong similarity with the Drosophila di shevelled gene, dsh. The Drosophila dishevelled gene encodes a cytoplasmic phosphoprotein th at regulates cell proliferation. [provided by RefSeq]
Other Designations	dishevelled 3 dishevelled 3 (homologous to Drosophila dsh)

## Pathway

- [Basal cell carcinoma](#)
- [Colorectal cancer](#)
- [Melanogenesis](#)
- [Notch signaling pathway](#)
- [Pathways in cancer](#)
- [Wnt signaling pathway](#)