

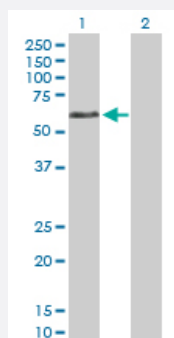
MaxPab®

DVL1 purified MaxPab rabbit polyclonal antibody (D01P)

Catalog # H00001855-D01P

Size 100 ug

Applications

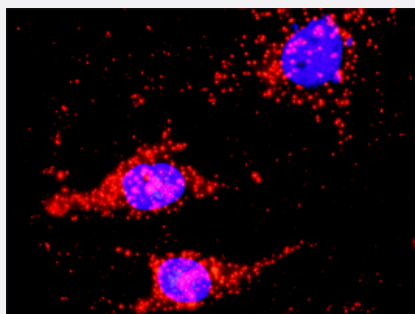


Western Blot (Transfected lysate)

Western Blot analysis of DVL1 expression in transfected 293T cell line ([H00001855-T02](#)) by DVL1 MaxPab polyclonal antibody.

Lane 1: DVL1 transfected lysate(47.70 KDa).

Lane 2: Non-transfected lysate.



In situ Proximity Ligation Assay (Cell)

Proximity Ligation Analysis of protein-protein interactions between DVL1 and CTNNB1. HeLa cells were stained with anti-DVL1 rabbit purified polyclonal 1:1200 and anti-CTNNB1 mouse monoclonal antibody 1:50. Each red dot represents the detection of protein-protein interaction complex, and nuclei were counterstained with DAPI (blue).

Specification

Product Description

Rabbit polyclonal antibody raised against a full-length human DVL1 protein.

Immunogen

DVL1 (NP_877580.1, 1 a.a. ~ 444 a.a) full-length human protein.

Sequence

MAETKIYHMDDEETPYLVKLPVAPERVTLADFKNVLSNRPVHAYKFFFKSMDQDFGVVKEEIFDD
NAKLPCFNGRVSVWLVAEGAHS DAGSQGTDSHTDLPPLERTGGIGDSRPPSFHPNVASSRD
GMDNETGTESMVSHRRERARRRNREEAARTNGHPRGDRRRDVGLPPDSASTALSSELESSSFV
DSEDEGSTSRLSSSTEQSTSSRLTRKYASSLLKHGFLRHTVNKITFSEQCYYVFGDLCNLATLNL
NSGSSGTSDDQLAPLPHPAAPWPLGQGYPYQYPGPPPCFPAYQDPGFSYSGSGTGSQQSE
GSKSSGSTRSSRRAPGREKERRAAGAGGSGSESDHTAPSGVGSSWRERPAGQLSRGSSPRS
QASATAPGLPPPHTTKAYTVVGGPPGPPVRELAAPPELTGSRQSFQKAMGNPCEFFVDIM

Host	Rabbit
Reactivity	Human
Quality Control Testing	Antibody reactive against mammalian transfected lysate.
Storage Buffer	In 1x PBS, pH 7.4
Storage Instruction	Store at -20°C or lower. Aliquot to avoid repeated freezing and thawing.

Applications

- Western Blot (Transfected lysate)

Western Blot analysis of DVL1 expression in transfected 293T cell line ([H00001855-T02](#)) by DVL1 MaxPab polyclonal antibody.

Lane 1: DVL1 transfected lysate(47.70 KDa).

Lane 2: Non-transfected lysate.

[Protocol Download](#)

- In situ* Proximity Ligation Assay (Cell)

Proximity Ligation Analysis of protein-protein interactions between DVL1 and CTNNB1. HeLa cells were stained with anti-DVL1 rabbit purified polyclonal 1:1200 and anti-CTNNB1 mouse monoclonal antibody 1:50. Each red dot represents the detection of protein-protein interaction complex, and nuclei were counterstained with DAPI (blue).

Gene Info — DVL1

Entrez GeneID	1855
GeneBank Accession#	NM_182779
Protein Accession#	NP_877580.1
Gene Name	DVL1
Gene Alias	DVL, MGC54245
Gene Description	dishevelled, dsh homolog 1 (Drosophila)
Omim ID	601365
Gene Ontology	Hyperlink

Gene Summary

DVL1, the human homolog of the Drosophila dishevelled gene (dsh) encodes a cytoplasmic phosphoprotein that regulates cell proliferation, acting as a transducer molecule for developmental processes, including segmentation and neuroblast specification. DVL1 is a candidate gene for neuroblastomatous transformation. The Schwartz-Jampel syndrome and Charcot-Marie-Tooth disease type 2A have been mapped to the same region as DVL1. The phenotypes of these diseases may be consistent with defects which might be expected from aberrant expression of a DVL gene during development. [provided by RefSeq]

Other Designations

OTTHUMP00000003104|dishevelled 1|dishevelled 1 (homologous to Drosophila dsh)

Pathway

- [Basal cell carcinoma](#)
- [Colorectal cancer](#)
- [Melanogenesis](#)
- [Notch signaling pathway](#)
- [Pathways in cancer](#)
- [Wnt signaling pathway](#)

Disease

- [Alzheimer disease](#)
- [Cleft Lip](#)
- [Cleft Palate](#)