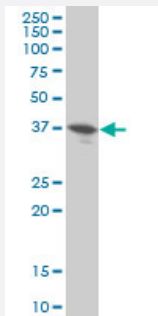


DUSP9 monoclonal antibody (M04), clone 2E3

Catalog # H00001852-M04

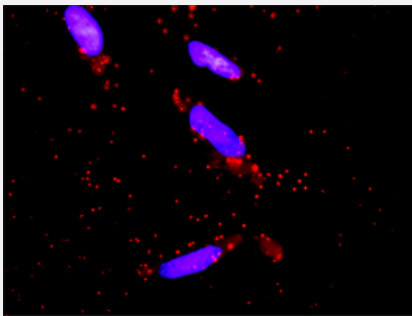
Size 100 ug

Applications



Western Blot (Cell lysate)

DUSP9 monoclonal antibody (M04), clone 2E3 Western Blot analysis of DUSP9 expression in HeLa (Cat # L013V1).



In situ Proximity Ligation Assay (Cell)

Proximity Ligation Analysis of protein-protein interactions between MAPK3 and DUSP9. HeLa cells were stained with anti-MAPK3 rabbit purified polyclonal 1:1200 and anti-DUSP9 mouse monoclonal antibody 1:50. Each red dot represents the detection of protein-protein interaction complex, and nuclei were counterstained with DAPI (blue).



Western Blot detection against Immunogen (37.29 kDa) .

Specification

Product Description

Mouse monoclonal antibody raised against a partial recombinant DUSP9.

Immunogen	DUSP9 (NP_001386, 174 a.a. ~ 278 a.a) partial recombinant protein with GST tag. MW of the GST tag alone is 26 KDa.
Sequence	AESEADRDSMSCGLDSEGATPPPVGRLASFPVQILPNLYLGSARDSANLESLAKLGIRYILNVTPNLPNFFEKNGDFHYKQIPISDHWSQNLSRFFPEAIEFIDE
Host	Mouse
Reactivity	Human
Interspecies Antigen Sequence	Mouse (89); Rat (88)
Isotype	IgG2a Kappa
Quality Control Testing	Antibody Reactive Against Recombinant Protein. Western Blot detection against Immunogen (37.29 KDa) .
Storage Buffer	In 1x PBS, pH 7.4
Storage Instruction	Store at -20°C or lower. Aliquot to avoid repeated freezing and thawing.

Applications

- Western Blot (Cell lysate)

DUSP9 monoclonal antibody (M04), clone 2E3 Western Blot analysis of DUSP9 expression in HeLa (Cat # L013V1).

[Protocol Download](#)

- Western Blot (Recombinant protein)

[Protocol Download](#)

- ELISA

- In situ* Proximity Ligation Assay (Cell)

Proximity Ligation Analysis of protein-protein interactions between MAPK3 and DUSP9. HeLa cells were stained with anti-MAPK3 rabbit purified polyclonal 1:1200 and anti-DUSP9 mouse monoclonal antibody 1:50. Each red dot represents the detection of protein-protein interaction complex, and nuclei were counterstained with DAPI (blue).

Gene Info — DUSP9

Entrez GeneID [1852](#)

GeneBank Accession#	NM_001395
Protein Accession#	NP_001386
Gene Name	DUSP9
Gene Alias	MKP-4, MKP4
Gene Description	dual specificity phosphatase 9
Omim ID	300134
Gene Ontology	Hyperlink
Gene Summary	<p>The protein encoded by this gene is a member of the dual specificity protein phosphatase subfamily. These phosphatases inactivate their target kinases by dephosphorylating both the phosphoserine/threonine and phosphotyrosine residues. They negatively regulate members of the mitogen-activated protein (MAP) kinase superfamily (MAPK/ERK, SAPK/JNK, p38), which is associated with cellular proliferation and differentiation. Different members of the family of dual specificity phosphatases show distinct substrate specificities for various MAP kinases, different tissue distribution and subcellular localization, and different modes of inducibility of their expression by extracellular stimuli. This gene product shows selectivity for members of the ERK family of MAP kinases, is expressed only in placenta, kidney, and fetal liver, and is localized to the cytoplasm and nucleus. [provided by RefSeq]</p>
Other Designations	OTTHUMP00000025951 OTTHUMP00000025953 map kinase phosphatase 4 serine/threonine specific protein phosphatase

Pathway

- [MAPK signaling pathway](#)

Disease

- [Diabetes Mellitus](#)
- [Genetic Predisposition to Disease](#)