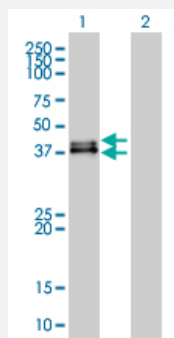


DUSP6 monoclonal antibody (M01), clone 3G2

Catalog # H00001848-M01

Size 100 ug

Applications

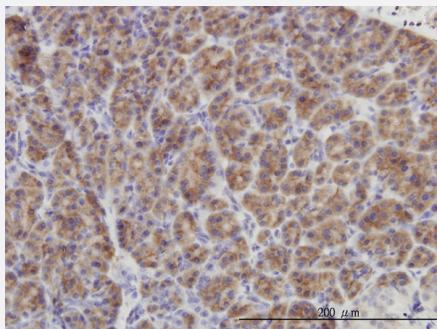


Western Blot (Transfected lysate)

Western Blot analysis of DUSP6 expression in transfected 293T cell line by DUSP6 monoclonal antibody (M01), clone 3G2.

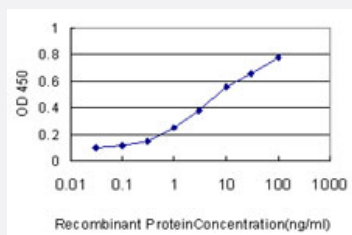
Lane 1: DUSP6 transfected lysate(42 KDa).

Lane 2: Non-transfected lysate.



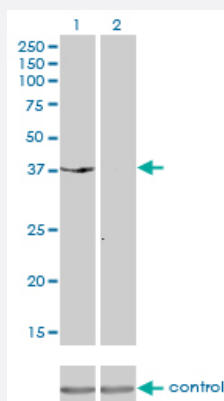
Immunohistochemistry (Formalin/PFA-fixed paraffin-embedded sections)

Immunoperoxidase of monoclonal antibody to DUSP6 on formalin-fixed paraffin-embedded human pancreas. [antibody concentration 3 ug/ml]



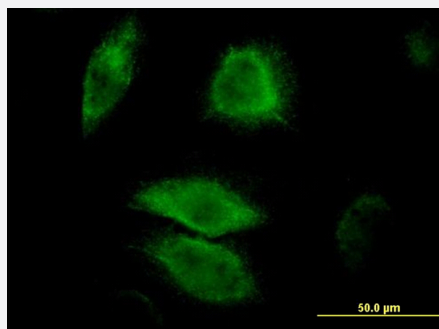
Sandwich ELISA (Recombinant protein)

Detection limit for recombinant GST tagged DUSP6 is approximately 1ng/ml as a capture antibody.



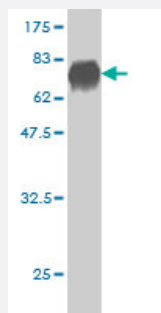
RNAi Knockdown (Antibody validated)

Western blot analysis of DUSP6 over-expressed 293 cell line, cotransfected with DUSP6 Validated Chimera RNAi (Cat # H00001848-R01V) (Lane 2) or non-transfected control (Lane 1). Blot probed with DUSP6 monoclonal antibody (M01), clone 3G2 (Cat # H00001848-M01). GAPDH (36.1 kDa) used as specificity and loading control.



Immunofluorescence

Immunofluorescence of monoclonal antibody to DUSP6 on HeLa cell. [antibody concentration 10 ug/ml]



Western Blot detection against Immunogen (67.65 KDa) .

Specification

Product Description

Mouse monoclonal antibody raised against a full length recombinant DUSP6.

Immunogen

DUSP6 (AAH03143, 1 a.a. ~ 381 a.a) full-length recombinant protein with GST tag. MW of the GST tag alone is 26 KDa.

Sequence

MIDTLRPVPFASEMAISKTVAWLNEQLELGNERLLLMDCRPQELYESSHIESAINVAIPGIMLRRLQ
KGNLPVRALFTRGEDRDRFTRRCGTDTVVLVYDESSSDWNENTGGESLLGLLLKKLKDEGCRAFY
LEGGFSKFQAEFSLHCETNLGSCSSSSPPLPVLGLGGLRISSDSSSDIESDLDRDPNSATDSD
GSPLSNSQPSFPVEILPFLYLGCARDSTNLVDLEEFGIKYLNVTPNLPNLFENAGEFKYKQIPISDH
WSQNLSQFFPEAISFIDEARGKNCGLVHCLAGISRSVTVTAYLMQKLNLSMNDAYDMKMKSN
ISPNFNFMGQLLDFERTLGLSSPCDNRVPAQQLYFTTPSNQNVYQVDSLQST

Host

Mouse

Reactivity	Human
Isotype	IgG1 Kappa
Quality Control Testing	Antibody Reactive Against Recombinant Protein. Western Blot detection against Immunogen (67.65 KDa) .
Storage Buffer	In 1x PBS, pH 7.4
Storage Instruction	Store at -20°C or lower. Aliquot to avoid repeated freezing and thawing.

Applications

- Western Blot (Transfected lysate)

Western Blot analysis of DUSP6 expression in transfected 293T cell line by DUSP6 monoclonal antibody (M01), clone 3G2.

Lane 1: DUSP6 transfected lysate(42 KDa).

Lane 2: Non-transfected lysate.

[Protocol Download](#)

- Western Blot (Recombinant protein)

[Protocol Download](#)

- Immunohistochemistry (Formalin/PFA-fixed paraffin-embedded sections)

Immunoperoxidase of monoclonal antibody to DUSP6 on formalin-fixed paraffin-embedded human pancreas. [antibody concentration 3 ug/ml]

[Protocol Download](#)

- Sandwich ELISA (Recombinant protein)

Detection limit for recombinant GST tagged DUSP6 is approximately 1ng/ml as a capture antibody.

[Protocol Download](#)

- ELISA

- RNAi Knockdown (Antibody validated)

Western blot analysis of DUSP6 over-expressed 293 cell line, cotransfected with DUSP6 Validated Chimera RNAi (Cat # H00001848-R01V) (Lane 2) or non-transfected control (Lane 1). Blot probed with DUSP6 monoclonal antibody (M01), clone 3G2 (Cat # H00001848-M01). GAPDH (36.1 kDa) used as specificity and loading control.

[Protocol Download](#)

- Immunofluorescence

Immunofluorescence of monoclonal antibody to DUSP6 on HeLa cell. [antibody concentration 10 ug/ml]

Gene Info — DUSP6

Entrez GeneID [1848](#)

GeneBank Accession# [BC003143](#)

Protein Accession# [AAH03143](#)

Gene Name DUSP6

Gene Alias MKP3, PYST1

Gene Description dual specificity phosphatase 6

Omim ID [602748](#)

Gene Ontology [Hyperlink](#)

Gene Summary

The protein encoded by this gene is a member of the dual specificity protein phosphatase subfamily. These phosphatases inactivate their target kinases by dephosphorylating both the phosphoserine/threonine and phosphotyrosine residues. They negatively regulate members of the mitogen-activated protein (MAP) kinase superfamily (MAPK/ERK, SAPK/JNK, p38), which are associated with cellular proliferation and differentiation. Different members of the family of dual specificity phosphatases show distinct substrate specificities for various MAP kinases, different tissue distribution and subcellular localization, and different modes of inducibility of their expression by extracellular stimuli. This gene product inactivates ERK2, is expressed in a variety of tissues with the highest levels in heart and pancreas, and unlike most other members of this family, is localized in the cytoplasm. Two transcript variants encoding different isoforms have been found for this gene. [provided by RefSeq]

Other Designations MAP kinase phosphatase 3|serine/threonine specific protein phosphatase

Publication Reference

- [TSH Signaling Overcomes B-RafV600E–Induced Senescence in Papillary Thyroid Carcinogenesis through Regulation of DUSP6.](#)

Kim YH, Choi YW, Han JH, Lee J, Soh EY, Park SH, Kim JH, Park TJ.

Neoplasia 2014 Dec; 16(12):1107.

Application: IHC, WB-Tr, Human, Papillary thyroid carcinoma, Thyrocytes, SNU790 cells

- [Dual specificity phosphatase 6 as a predictor of invasiveness in papillary thyroid cancer.](#)

Lee JU, Huang S, Lee MH, Lee SE, Ryu MJ, Kim SJ, Kim YK, Kim SY, Joung KH, Kim JM, Shong M, Jo YS.

European Journal of Endocrinology 2012 Apr; 167(1):93.

Application: IHC-P, WB, Human, FRO cells, Human papillary thyroid cancer

- [Down-Regulation of DUSP6 Expression in Lung Cancer: Its Mechanism and Potential Role in Carcinogenesis.](#)

Okudela K, Yazawa T, Woo T, Sakaeda M, Ishii J, Mitsui H, Shimoyamada H, Sato H, Tajiri M, Ogawa N, Masuda M, Takahashi T, Sugimura H, Kitamura H.

The American Journal of Pathology 2009 Aug; 175(2):867.

Application: WB, IHC, Human, 16HBE14o, A549, H358, H1299 cells, Lung

Pathway

- [MAPK signaling pathway](#)

Disease

- [Bipolar Disorder](#)
- [Cardiovascular Diseases](#)
- [Diabetes Mellitus](#)
- [Edema](#)
- [Genetic Predisposition to Disease](#)
- [Kidney Failure](#)