

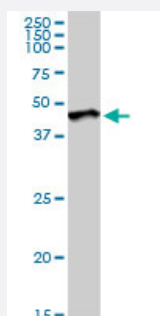
MaxPab®

# DUSP6 purified MaxPab rabbit polyclonal antibody (D01P)

Catalog # H00001848-D01P

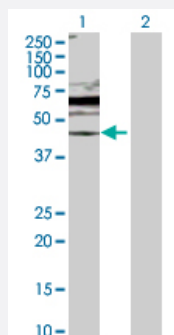
Size 100 ug

## Applications



### Western Blot (Tissue lysate)

DUSP6 MaxPab rabbit polyclonal antibody. Western Blot analysis of DUSP6 expression in human pancreas.



### Western Blot (Transfected lysate)

Western Blot analysis of DUSP6 expression in transfected 293T cell line ([H00001848-T02](#)) by DUSP6 MaxPab polyclonal antibody.

Lane 1: DUSP6 transfected lysate(42.30 KDa).

Lane 2: Non-transfected lysate.

## Specification

### Product Description

Rabbit polyclonal antibody raised against a full-length human DUSP6 protein.

### Immunogen

DUSP6 (NP\_001937.2, 1 a.a. ~ 381 a.a) full-length human protein.

### Sequence

MIDTLRPVPFASEMAISKTVAWLNEQLELGNERLLLMDCRPQELYESSHIESAINVAIPGIMLRRLQ  
KGNLPVRALFTRGEDRDRFTRRCGTDTVVLVYDESSDWNENTGGESVLGLLLKKLKDEGCRAFY  
LEGGFSKFQAEFSLHCETNLDGSCSSSSPPLPVLGLGGLRISSDSSSDIESDLDRDPNSATDSD  
GSPLSNSQPSFPVEILPFLYLGC AKDSTNLDVLEEFGIKYLNVTPNLPNLFENAGEFKYKQIPISDH  
WSQNLSQFFPEAISFIDEARGKNCGVLVHCLAGISRSVTVTVAYLMQKLNLSMNDAYDMKMKKSN  
ISPNFNFMGQLLDFERTLGLSSPCDNRVPAQQLYFTTPSNQNVYQVDSLQST

### Host

Rabbit

Reactivity	Human
Quality Control Testing	Antibody reactive against mammalian transfected lysate.
Storage Buffer	In 1x PBS, pH 7.4
Storage Instruction	Store at -20°C or lower. Aliquot to avoid repeated freezing and thawing.

## Applications

- Western Blot (Tissue lysate)

DUSP6 MaxPab rabbit polyclonal antibody. Western Blot analysis of DUSP6 expression in human pancreas.

[Protocol Download](#)

- Western Blot (Transfected lysate)

Western Blot analysis of DUSP6 expression in transfected 293T cell line ([H00001848-T02](#)) by DUSP6 MaxPab polyclonal antibody.

Lane 1: DUSP6 transfected lysate(42.30 KDa).

Lane 2: Non-transfected lysate.

[Protocol Download](#)

## Gene Info — DUSP6

Entrez GeneID	<a href="#">1848</a>
GeneBank Accession#	<a href="#">NM_001946</a>
Protein Accession#	<a href="#">NP_001937.2</a>
Gene Name	DUSP6
Gene Alias	MKP3, PYST1
Gene Description	dual specificity phosphatase 6
Omim ID	<a href="#">602748</a>
Gene Ontology	<a href="#">Hyperlink</a>

**Gene Summary**

The protein encoded by this gene is a member of the dual specificity protein phosphatase subfamily. These phosphatases inactivate their target kinases by dephosphorylating both the phosphoserine/threonine and phosphotyrosine residues. They negatively regulate members of the mitogen-activated protein (MAP) kinase superfamily (MAPK/ERK, SAPK/JNK, p38), which are associated with cellular proliferation and differentiation. Different members of the family of dual specificity phosphatases show distinct substrate specificities for various MAP kinases, different tissue distribution and subcellular localization, and different modes of inducibility of their expression by extracellular stimuli. This gene product inactivates ERK2, is expressed in a variety of tissues with the highest levels in heart and pancreas, and unlike most other members of this family, is localized in the cytoplasm. Two transcript variants encoding different isoforms have been found for this gene. [provided by RefSeq]

**Other Designations**

MAP kinase phosphatase 3|serine/threonine specific protein phosphatase

**Pathway**

- [MAPK signaling pathway](#)

**Disease**

- [Bipolar Disorder](#)
- [Cardiovascular Diseases](#)
- [Diabetes Mellitus](#)
- [Edema](#)
- [Genetic Predisposition to Disease](#)
- [Kidney Failure](#)