

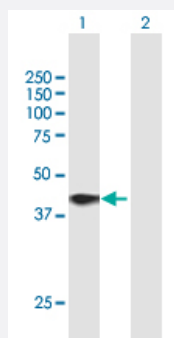
MaxPab®

DUSP6 purified MaxPab mouse polyclonal antibody (B01P)

Catalog # H00001848-B01P

Size 50 ug

Applications



Western Blot (Transfected lysate)

Western Blot analysis of DUSP6 expression in transfected 293T cell line ([H00001848-T01](#)) by DUSP6 MaxPab polyclonal antibody.

Lane 1: DUSP6 transfected lysate (41.91 KDa).

Lane 2: Non-transfected lysate.

Specification

Product Description	Mouse polyclonal antibody raised against a full-length human DUSP6 protein.
Immunogen	DUSP6 (NP_001937, 1 a.a. ~ 381 a.a) full-length human protein.
Sequence	MIDTLRPVPFASEMAISKTVAWLNEQLELGNERLLLMDCRPQELYESSHIESAINVAIPGIMLRRLQ KGNLPVRALFTRGEDRDRFTRRCGTDTVLYDESSSDWNENTGGESVLGLLLKKLKDEGCRAFY LEGGFSKFQAEFSLHCETNLDGSCSSSSPPLPVLGLGGLRISDSSSDIESDLDRDPNSATDSD GSPLSNSQPSFPVEILPFLYLGCAKDSTNLDVLEEFGIKYILNVTPNLPNLFENAGEFKYKQIPISDH WSQNLSQFFPEAISFIDEARGKNCVGLVHCLAGISRSVTVTVAYLMQKLNLSMNDAYDIVKMKKSN ISPNNFIMGQLLDFERTLGLSSPCDNRVPAQQLYFTTPSNQNVYQVDSLQST
Host	Mouse
Reactivity	Human
Quality Control Testing	Antibody reactive against mammalian transfected lysate.
Storage Buffer	In 1x PBS, pH 7.4
Storage Instruction	Store at -20°C or lower. Aliquot to avoid repeated freezing and thawing.

Applications

- Western Blot (Transfected lysate)

Western Blot analysis of DUSP6 expression in transfected 293T cell line ([H00001848-T01](#)) by DUSP6 MaxPab polyclonal antibody.

Lane 1: DUSP6 transfected lysate(41.91 KDa).

Lane 2: Non-transfected lysate.

[Protocol Download](#)

Gene Info — DUSP6

Entrez GeneID [1848](#)

GeneBank Accession# [NM_001946](#)

Protein Accession# [NP_001937](#)

Gene Name DUSP6

Gene Alias MKP3, PYST1

Gene Description dual specificity phosphatase 6

Omim ID [602748](#)

Gene Ontology [Hyperlink](#)

Gene Summary

The protein encoded by this gene is a member of the dual specificity protein phosphatase subfamily. These phosphatases inactivate their target kinases by dephosphorylating both the phosphoserine/threonine and phosphotyrosine residues. They negatively regulate members of the mitogen-activated protein (MAP) kinase superfamily (MAPK/ERK, SAPK/JNK, p38), which are associated with cellular proliferation and differentiation. Different members of the family of dual specificity phosphatases show distinct substrate specificities for various MAP kinases, different tissue distribution and subcellular localization, and different modes of inducibility of their expression by extracellular stimuli. This gene product inactivates ERK2, is expressed in a variety of tissues with the highest levels in heart and pancreas, and unlike most other members of this family, is localized in the cytoplasm. Two transcript variants encoding different isoforms have been found for this gene. [provided by RefSeq]

Other Designations MAP kinase phosphatase 3|serine/threonine specific protein phosphatase

Pathway

- [MAPK signaling pathway](#)

Disease

- [Bipolar Disorder](#)
- [Cardiovascular Diseases](#)
- [Diabetes Mellitus](#)
- [Edema](#)
- [Genetic Predisposition to Disease](#)
- [Kidney Failure](#)