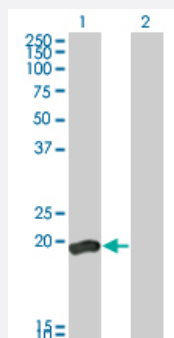


DUSP3 monoclonal antibody (M01A), clone 5B7

Catalog # H00001845-M01A

Size 200 uL

Applications

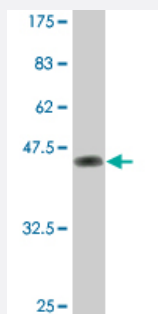


Western Blot (Transfected lysate)

Western Blot analysis of DUSP3 expression in transfected 293T cell line by DUSP3 monoclonal antibody (M01A), clone 5B7.

Lane 1: DUSP3 transfected lysate(20.478 KDa).

Lane 2: Non-transfected lysate.



Western Blot detection against Immunogen (46.09 KDa) .

Specification

Product Description	Mouse monoclonal antibody raised against a full-length recombinant DUSP3.
Immunogen	DUSP3 (AAH02682, 1 a.a. ~ 185 a.a) full-length recombinant protein with GST tag. MW of the GST tag alone is 26 KDa.
Sequence	MSGSFELSVQDLNDLLSDGSGCYSLPSQPCNEVTPRIYVGNASVAQDIPKLQKLGITHVLNAAEG RSFMHVNTNANFYKDSGITYLGKANDTQEFNLSAYFERAADFIDQALAQKNGRVLVHCREGYSRS PTLVIAYLMMRQKMDVKSALSVMRQNREIGPNDGFLAQLCQLNDRLAKEGKLP
Host	Mouse
Reactivity	Human

Interspecies Antigen Sequence	Mouse (93); Rat (92)
Isotype	IgG2a Kappa
Quality Control Testing	Antibody Reactive Against Recombinant Protein. Western Blot detection against Immunogen (46.09 KDa) .
Storage Buffer	In ascites fluid
Storage Instruction	Store at -20°C or lower. Aliquot to avoid repeated freezing and thawing.

Applications

- Western Blot (Transfected lysate)

Western Blot analysis of DUSP3 expression in transfected 293T cell line by DUSP3 monoclonal antibody (M01A), clone 5B7.

Lane 1: DUSP3 transfected lysate(20.478 KDa).

Lane 2: Non-transfected lysate.

[Protocol Download](#)

- Western Blot (Recombinant protein)

[Protocol Download](#)

- ELISA

Gene Info — DUSP3

Entrez GeneID	1845
GeneBank Accession#	BC002682
Protein Accession#	AAH02682
Gene Name	DUSP3
Gene Alias	VHR
Gene Description	dual specificity phosphatase 3
Omim ID	600183
Gene Ontology	Hyperlink

Gene Summary

The protein encoded by this gene is a member of the dual specificity protein phosphatase subfamily. These phosphatases inactivate their target kinases by dephosphorylating both the phosphoserine/threonine and phosphotyrosine residues. They negatively regulate members of the mitogen-activated protein (MAP) kinase superfamily (MAPK/ERK, SAPK/JNK, p38), which are associated with cellular proliferation and differentiation. Different members of the family of dual specificity phosphatases show distinct substrate specificities for various MAP kinases, different tissue distribution and subcellular localization, and different modes of inducibility of their expression by extracellular stimuli. This gene maps in a region that contains the BRCA1 locus which confers susceptibility to breast and ovarian cancer. Although DUSP3 is expressed in both breast and ovarian tissues, mutation screening in breast cancer pedigrees and in sporadic tumors was negative, leading to the conclusion that this gene is not BRCA1. [provided by RefSeq]

Other Designations

serine/threonine specific protein phosphatase|vaccinia virus phosphatase VH1-related

Pathway

- [MAPK signaling pathway](#)