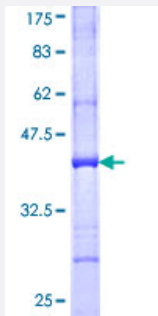


DTNB (Human) Recombinant Protein (Q01)

Catalog # H00001838-Q01

Size 25 ug, 10 ug

Applications



Specification

Product Description	Human DTNB partial ORF (NP_899205, 1 a.a. - 89 a.a.) recombinant protein with GST-tag at N-terminal.
Sequence	MIEESGNKRKTMAEKRQLFIEMRAQNFDVIRLSTYRTACKLRFBVQKRCNLHLVDIWNMIEAFRDNG LNTLDHTEISVSRLETVISSY
Host	Wheat Germ (in vitro)
Theoretical MW (kDa)	35.53
Interspecies Antigen Sequence	Mouse (98); Rat (98)
Preparation Method	in vitro wheat germ expression system
Purification	Glutathione Sepharose 4 Fast Flow
Quality Control Testing	12.5% SDS-PAGE Stained with Coomassie Blue.
Storage Buffer	50 mM Tris-HCl, 10 mM reduced Glutathione, pH=8.0 in the elution buffer.
Storage Instruction	Store at -80°C. Aliquot to avoid repeated freezing and thawing.
Note	Best use within three months from the date of receipt of this protein.

Applications

- Enzyme-linked Immunoabsorbent Assay
- Western Blot (Recombinant protein)
- Antibody Production
- Protein Array

Gene Info — DTNB

Entrez GeneID [1838](#)

GeneBank Accession# [NM_183361](#)

Protein Accession# [NP_899205](#)

Gene Name DTNB

Gene Alias MGC17163, MGC57126

Gene Description dystrobrevin, beta

Omim ID [602415](#)

Gene Ontology [Hyperlink](#)

Gene Summary This gene encodes dystrobrevin beta, a component of the dystrophin-associated protein complex (DPC). The DPC consists of dystrophin and several integral and peripheral membrane proteins, including dystroglycans, sarcoglycans, syntrophins and dystrobrevin alpha and beta. The DPC localizes to the sarcolemma and its disruption is associated with various forms of muscular dystrophy. Dystrobrevin beta is thought to interact with syntrophin and the DP71 short form of dystrophin. Alternatively spliced transcript variants encoding different isoforms have been identified. [provided by RefSeq]

Other Designations -