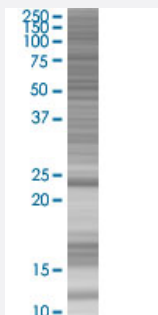


# TSC22D3 293T Cell Transient Overexpression Lysate(Denatured)

Catalog # H00001831-T01

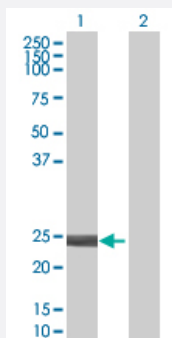
Size 100 uL

## Applications



### SDS-PAGE Gel

TSC22D3 transfected lysate.



### Western Blot

Lane 1: TSC22D3 transfected lysate ( 22.11 KDa)

Lane 2: Non-transfected lysate.

## Specification

**Transfected Cell Line** 293T

**Plasmid** pCMV-TSC22D3 full-length

**Host** Human

**Theoretical MW (kDa)** 22.11

**Quality Control Testing** Transient overexpression cell lysate was tested with Anti-TSC22D3 antibody ([H00001831-B01](#)) by Western Blots.  
SDS-PAGE Gel  
TSC22D3 transfected lysate.  
Western Blot  
Lane 1: TSC22D3 transfected lysate ( 22.11 KDa)  
Lane 2: Non-transfected lysate.

**Storage Buffer**

1X Sample Buffer (50 mM Tris-HCl, 2% SDS, 10% glycerol, 300 mM 2-mercaptoethanol, 0.01% Bromophenol blue)

**Storage Instruction**

Store at -80°C. Aliquot to avoid repeated freezing and thawing.

## Applications

- Western Blot

## Gene Info — TSC22D3

**Entrez GeneID**[1831](#)**GeneBank Accession#**[NM\\_198057.2](#)**Protein Accession#**[-](#)**Gene Name**

TSC22D3

**Gene Alias**

DIP, DKFZp313A1123, DSIPI, GILZ, TSC-22R, hDIP

**Gene Description**

TSC22 domain family, member 3

**Omim ID**[300506](#)**Gene Ontology**[Hyperlink](#)**Gene Summary**

The protein encoded by this gene shares significant sequence identity with the murine TSC-22 and Drosophila shs, both of which are leucine zipper proteins, that function as transcriptional regulators. The expression of this gene is stimulated by glucocorticoids and interleukin 10, and it appears to play a key role in the anti-inflammatory and immunosuppressive effects of this steroid and chemokine. Transcript variants encoding different isoforms have been identified for this gene. [provided by RefSeq]

**Other Designations**

DSIP-immunoreactive leucine zipper protein|OTTHUMP00000023811|OTTHUMP00000023813|OTTHUMP00000023814|TSC-22 related protein|delta sleep inducing peptide, immunoreactor|glucocorticoid-induced leucine zipper protein

## Disease

- [Diabetes Mellitus](#)