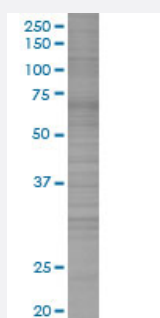


# DSCR1 293T Cell Transient Overexpression Lysate(Denatured)

Catalog # H00001827-T01

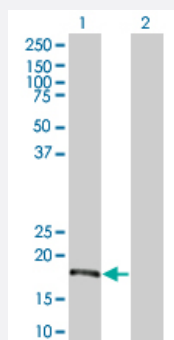
Size 100 uL

## Applications



### SDS-PAGE Gel

DSCR1 transfected lysate.



### Western Blot

Lane 1: DSCR1 transfected lysate ( 13.3 KDa)

Lane 2: Non-transfected lysate.

## Specification

**Transfected Cell Line** 293T

**Plasmid** pCMV-DSCR1 full-length

**Host** Human

**Theoretical MW (kDa)** 13.3

**Quality Control Testing** Transient overexpression cell lysate was tested with Anti-DSCR1 antibody ([H00001827-B01](#)) by Western Blots.  
SDS-PAGE Gel  
DSCR1 transfected lysate.  
Western Blot  
Lane 1: DSCR1 transfected lysate ( 13.3 KDa)  
Lane 2: Non-transfected lysate.

<b>Storage Buffer</b>	1X Sample Buffer (50 mM Tris-HCl, 2% SDS, 10% glycerol, 300 mM 2-mercaptoethanol, 0.01% Bromophenol blue)
<b>Storage Instruction</b>	Store at -80°C. Aliquot to avoid repeated freezing and thawing.

## Applications

- Western Blot

## Gene Info — RCAN1

<b>Entrez GeneID</b>	<a href="#">1827</a>
<b>GeneBank Accession#</b>	<a href="#">NM_203417.1</a>
<b>Protein Accession#</b>	-
<b>Gene Name</b>	RCAN1
<b>Gene Alias</b>	ADAPT78, CSP1, DSC1, DSCR1, MCIP1, RCN1
<b>Gene Description</b>	regulator of calcineurin 1
<b>Omim ID</b>	<a href="#">602917</a>
<b>Gene Ontology</b>	<a href="#">Hyperlink</a>
<b>Gene Summary</b>	The protein encoded by this gene interacts with calcineurin A and inhibits calcineurin-dependent signaling pathways, possibly affecting central nervous system development. This gene is located in the minimal candidate region for the Down syndrome phenotype, and is overexpressed in the brain of Down syndrome fetuses. Chronic overexpression of this gene may lead to neurofibrillary tangles such as those associated with Alzheimer disease. Three transcript variants encoding three different isoforms have been found for this gene. [provided by RefSeq]
<b>Other Designations</b>	Down syndrome candidate region 1 Down syndrome critical region gene 1 calciopressin 1 calcium and oxidant-inducible mRNA modulatory calcineurin-interacting protein 1 myocyte-enriched calcineurin-interacting protein 1 near DSCR proline-rich protein

## Disease

- [Cognition](#)
- [Genetic Predisposition to Disease](#)

- [Schizophrenia](#)
- [Tobacco Use Disorder](#)