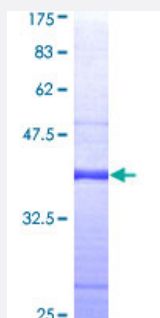


# DSCR1 (Human) Recombinant Protein (Q01)

Catalog # H00001827-Q01

Size 25 ug, 10 ug

## Applications



## Specification

<b>Product Description</b>	Human DSCR1 partial ORF ( AAH02864, 1 a.a. - 100 a.a.) recombinant protein with GST-tag at N-terminal.
<b>Sequence</b>	MEEVDLQDLPSATIACHLDPRVFVDGLCRAKFESLFRITYDKDITFQYFKSFKRVRINFSNPFSAAD ARLQLHKTEFLGKEMKLYFAQTLHIGSSHLAPPN
<b>Host</b>	Wheat Germ (in vitro)
<b>Theoretical MW (kDa)</b>	36.63
<b>Preparation Method</b>	<a href="#">in vitro wheat germ expression system</a>
<b>Purification</b>	Glutathione Sepharose 4 Fast Flow
<b>Quality Control Testing</b>	12.5% SDS-PAGE Stained with Coomassie Blue.
<b>Storage Buffer</b>	50 mM Tris-HCl, 10 mM reduced Glutathione, pH=8.0 in the elution buffer.
<b>Storage Instruction</b>	Store at -80°C. Aliquot to avoid repeated freezing and thawing.
<b>Note</b>	Best use within three months from the date of receipt of this protein.

## Applications

- Enzyme-linked Immunoabsorbent Assay
- Western Blot (Recombinant protein)
- Antibody Production
- Protein Array

## Gene Info — RCAN1

Entrez GeneID [1827](#)

GeneBank Accession# [BC002864](#)

Protein Accession# [AAH02864](#)

Gene Name RCAN1

Gene Alias ADAPT78, CSP1, DSC1, DSCR1, MCIP1, RCN1

Gene Description regulator of calcineurin 1

Omim ID [602917](#)

Gene Ontology [Hyperlink](#)

**Gene Summary** The protein encoded by this gene interacts with calcineurin A and inhibits calcineurin-dependent signaling pathways, possibly affecting central nervous system development. This gene is located in the minimal candidate region for the Down syndrome phenotype, and is overexpressed in the brain of Down syndrome fetuses. Chronic overexpression of this gene may lead to neurofibrillary tangles such as those associated with Alzheimer disease. Three transcript variants encoding three different isoforms have been found for this gene. [provided by RefSeq]

**Other Designations** Down syndrome candidate region 1|Down syndrome critical region gene 1|calciopressin 1|calcium and oxidant-inducible mRNA|modulatory calcineurin-interacting protein 1|myocyte-enriched calcineurin-interacting protein 1|near DSCR proline-rich protein

## Disease

- [Cognition](#)
- [Genetic Predisposition to Disease](#)

- [Schizophrenia](#)
- [Tobacco Use Disorder](#)