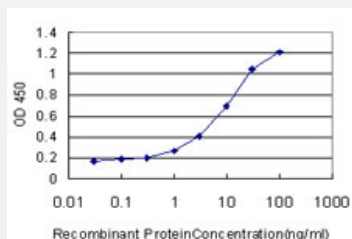


# DSC3 monoclonal antibody (M01), clone 4D2

Catalog # H00001825-M01

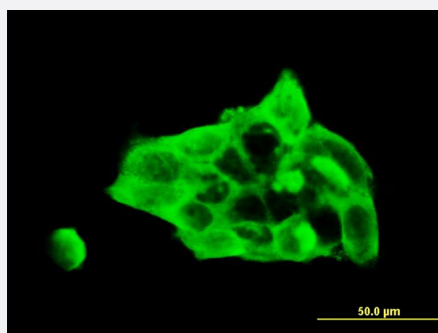
Size 100 ug

## Applications



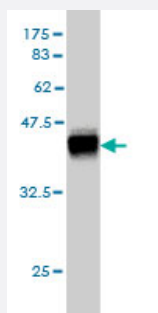
### Sandwich ELISA (Recombinant protein)

Detection limit for recombinant GST tagged DSC3 is approximately 1ng/ml as a capture antibody.



### Immunofluorescence

Immunofluorescence of monoclonal antibody to DSC3 on A-431 cell. [antibody concentration 10 ug/ml]



Western Blot detection against Immunogen (36.74 KDa) .

## Specification

### Product Description

Mouse monoclonal antibody raised against a partial recombinant DSC3.

Immunogen	DSC3 (NP_001932, 585 a.a. ~ 684 a.a) partial recombinant protein with GST tag. MW of the GST tag alone is 26 KDa.
Sequence	CKPKMGYTDILAVDPDEPVHGAPFYFSLPNTSPEISRLWSLTKVNDTAARLSYQKNAGFQEYTIPTVKDRAGQAATKLLRVNLCECTHPTQCRATSRST
Host	Mouse
Reactivity	Human
Interspecies Antigen Sequence	Mouse (74); Rat (69)
Isotype	IgG2b Kappa
Quality Control Testing	Antibody Reactive Against Recombinant Protein. Western Blot detection against Immunogen (36.74 KDa) .
Storage Buffer	In 1x PBS, pH 7.4
Storage Instruction	Store at -20°C or lower. Aliquot to avoid repeated freezing and thawing.

## Applications

- Western Blot (Recombinant protein)

[Protocol Download](#)

- Sandwich ELISA (Recombinant protein)

Detection limit for recombinant GST tagged DSC3 is approximately 1ng/ml as a capture antibody.

[Protocol Download](#)

- ELISA

- Immunofluorescence

Immunofluorescence of monoclonal antibody to DSC3 on A-431 cell. [antibody concentration 10 ug/ml]

## Gene Info — DSC3

Entrez GeneID [1825](#)

GeneBank Accession# [NM\\_001941](#)

Protein Accession#	<a href="#">NP_001932</a>
Gene Name	DSC3
Gene Alias	CDHF3, DSC, DSC1, DSC2, DSC4, HT-CP
Gene Description	desmocollin 3
Omim ID	<a href="#">600271</a>
Gene Ontology	<a href="#">Hyperlink</a>
Gene Summary	<p>The protein encoded by this gene is a calcium-dependent glycoprotein that is a member of the desmocollin subfamily of the cadherin superfamily. These desmosomal family members, along with the desmogleins, are found primarily in epithelial cells where they constitute the adhesive proteins of the desmosome cell-cell junction and are required for cell adhesion and desmosome formation. The desmosomal family members are arranged in two clusters on chromosome 18, occupying less than 650 kb combined. Alternative splicing results in two transcript variants encoding distinct isoforms. [provided by RefSeq]</p>
Other Designations	desmocollin 4

## Disease

- [Genetic Predisposition to Disease](#)
- [Ovarian Neoplasms](#)
- [Tobacco Use Disorder](#)