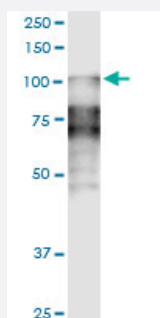


# DSC2 monoclonal antibody (M14), clone 1F2

Catalog # H00001824-M14

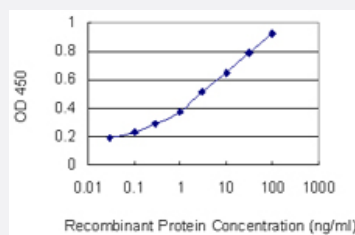
Size 100 ug

## Applications



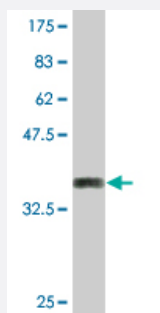
### Western Blot (Tissue lysate)

DSC2 monoclonal antibody (M14), clone 1F2. Western Blot analysis of DSC2 expression in human spleen.



### Sandwich ELISA (Recombinant protein)

Detection limit for recombinant GST tagged DSC2 is 0.03 ng/ml as a capture antibody.



Western Blot detection against Immunogen (35.75 KDa) .

## Specification

### Product Description

Mouse monoclonal antibody raised against a partial recombinant DSC2.

Immunogen	DSC2 (NP_077740.1, 444 a.a. ~ 534 a.a) partial recombinant protein with GST tag. MW of the GST tag alone is 26 KDa.
Sequence	SREASPRSAMSTATVTNVNVEDQDEGPECNPPIQTVRMKENAEVGTTSNGYKAYDPETRSSSGIR YKKLTDPTGWVTIDENTGSIKVFRSLD
Host	Mouse
Reactivity	Human
Isotype	IgG2b Kappa
Quality Control Testing	Antibody Reactive Against Recombinant Protein. Western Blot detection against Immunogen (35.75 KDa) .
Storage Buffer	In 1x PBS, pH 7.4
Storage Instruction	Store at -20°C or lower. Aliquot to avoid repeated freezing and thawing.

## Applications

- Western Blot (Tissue lysate)

DSC2 monoclonal antibody (M14), clone 1F2. Western Blot analysis of DSC2 expression in human spleen.

[Protocol Download](#)

- Western Blot (Recombinant protein)

[Protocol Download](#)

- Sandwich ELISA (Recombinant protein)

Detection limit for recombinant GST tagged DSC2 is 0.03 ng/ml as a capture antibody.

[Protocol Download](#)

- ELISA

## Gene Info — DSC2

Entrez GeneID	<a href="#">1824</a>
GeneBank Accession#	<a href="#">NM_024422</a>
Protein Accession#	<a href="#">NP_077740.1</a>

Gene Name	DSC2
Gene Alias	ARVD11, CDHF2, DG2, DGI/III, DKFZp686I11137, DSC3
Gene Description	desmocollin 2
Omim ID	<a href="#">125645 610476</a>
Gene Ontology	<a href="#">Hyperlink</a>
Gene Summary	<p>The protein encoded by this gene is a calcium-dependent glycoprotein that is a member of the desmocollin subfamily of the cadherin superfamily. These desmosomal family members, along with the desmogleins, are found primarily in epithelial cells where they constitute the adhesive proteins of the desmosome cell-cell junction and are required for cell adhesion and desmosome formation. The desmosomal family members are arranged in two clusters on chromosome 18, occupying less than 650 kb combined. Mutations in this gene are associated with arrhythmogenic right ventricular dysplasia-11. Alternative splicing results in two transcript variants encoding distinct isoforms. [provided by RefSeq]</p>
Other Designations	desmosomal glycoprotein II/III

## Pathway

- [Arrhythmogenic right ventricular cardiomyopathy \(ARVC\)](#)

## Disease

- [Arrhythmias](#)
- [Arrhythmogenic Right Ventricular Dysplasia](#)
- [Cardiomyopathy](#)
- [Genetic Predisposition to Disease](#)