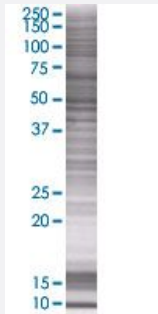


DPH2 293T Cell Transient Overexpression Lysate(Denatured)

Catalog # H00001802-T01

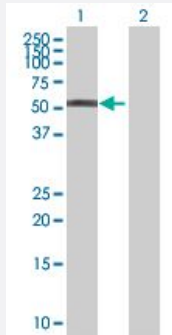
Size 100 uL

Applications



SDS-PAGE Gel

DPH2 transfected lysate.



Western Blot

Lane 1: DPH2 transfected lysate (53.9 KDa)

Lane 2: Non-transfected lysate.

Specification

Transfected Cell Line 293T

Plasmid pCMV-DPH2 full-length

Host Human

Theoretical MW (kDa) 53.9

Quality Control Testing

Transient overexpression cell lysate was tested with Anti-DPH2 antibody ([H00001802-B01](#)) by Western Blots.

SDS-PAGE Gel

DPH2 transfected lysate.

Western Blot

Lane 1: DPH2 transfected lysate (53.9 KDa)

Lane 2: Non-transfected lysate.

Storage Buffer	1X Sample Buffer (50 mM Tris-HCl, 2% SDS, 10% glycerol, 300 mM 2-mercaptoethanol, 0.01% Bromophenol blue)
Storage Instruction	Store at -80°C. Aliquot to avoid repeated freezing and thawing.

Applications

- Western Blot

Gene Info — DPH2

Entrez GeneID	1802
GeneBank Accession#	NM_001384.4
Protein Accession#	NP_001375.2
Gene Name	DPH2
Gene Alias	DPH2L2
Gene Description	DPH2 homolog (S. cerevisiae)
Omim ID	603456
Gene Ontology	Hyperlink
Gene Summary	This gene is one of two human genes similar to the yeast gene dph2. The yeast gene was identified by its ability to complement a diphthamide mutant strain, and thus probably functions in diphthamide biosynthesis. Diphthamide is a post-translationally modified histidine residue present in elongation factor 2 (EF2) that is the target of diphtheria toxin ADP-ribosylation. Two transcript variants encoding different isoforms have been found for this gene. [provided by RefSeq]
Other Designations	DPH2-like 2 OTTHUMP00000010007 diphthamide biosynthesis protein 2 diphthamide biosynthesis-like protein 2 diphtheria toxin resistance protein required for diphthamide biosynthesis-like 2

Disease

- [Tobacco Use Disorder](#)