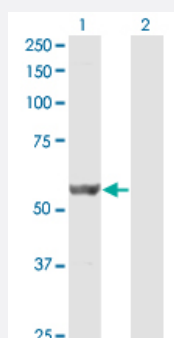


DPH2 monoclonal antibody (M07), clone 3F7

Catalog # H00001802-M07

Size 100 ug

Applications

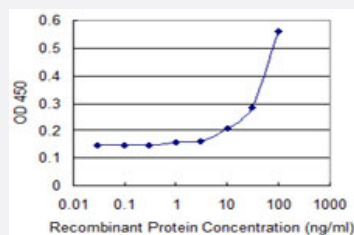


Western Blot (Transfected lysate)

Western Blot analysis of DPH2 expression in transfected 293T cell line by DPH2 monoclonal antibody (M07), clone 3F7.

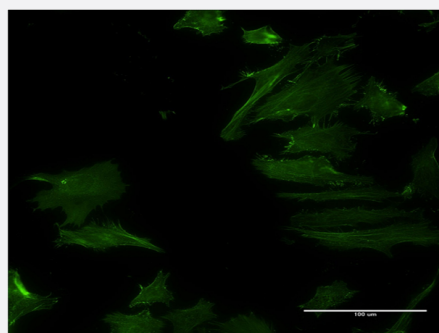
Lane 1: DPH2 transfected lysate (Predicted MW: 52.1 kDa).

Lane 2: Non-transfected lysate.



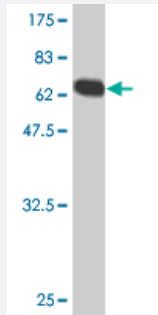
Sandwich ELISA (Recombinant protein)

Detection limit for recombinant GST tagged DPH2 is 3 ng/ml as a capture antibody.



Immunofluorescence

Immunofluorescence of monoclonal antibody to DPH2 on HeLa cell . [antibody concentration 10 ug/ml]



Western Blot detection against Immunogen (79.53 KDa) .

Specification

Product Description	Mouse monoclonal antibody raised against a full-length recombinant DPH2.
Immunogen	DPH2 (AAH16956, 1 a.a. ~ 489 a.a) full-length recombinant protein with GST tag. MW of the GST tag alone is 26 KDa.
Sequence	MESMFSSPAEAAALQRETGVPGLLTPLDLDGVYELERVAGFVRDLGCERVALQFPDQLLGDAV AVAARLEETTGSKMFI LGDTAYGCCVDVLGAEQAGAQAALIHFGPACLSPPARLPVAFVLRQRS VALELCVKAFE AQNPDPKAPVVLLSEPACAHAEALATLLRPRYDLLVSSPAFPQPVGSLSPEP MPLERFGRRFPLAPGRRLEEYGAFFYVGGSKASPDPLDPDLSRLLLGWAPGQPFSSCCPDTGK TQDEGARAGRLRARRRYLVERARDARVVGLLAGTLGVAQHREALAHLRNLTQAAGKRSYVLALG RPTPAKLANFPEVDVFLACPLGALAPQLSGSFFQPI LAPCELEAACNPAWPPPGLAPHLTHYA DLLPGSPFHVALPPPESELWETPDVSLITGDLRPPPAWKSSNDHGSLALTPRPQLELAESSPAA SFLSSRSWQGLEPRLGQTPVTEAVSGRRGIAIAYEDEGSG
Host	Mouse
Reactivity	Human
Isotype	IgG2a Kappa
Quality Control Testing	Antibody Reactive Against Recombinant Protein. Western Blot detection against Immunogen (79.53 KDa) .
Storage Buffer	In 1x PBS, pH 7.4
Storage Instruction	Store at -20°C or lower. Aliquot to avoid repeated freezing and thawing.

Applications

- Western Blot (Transfected lysate)

Western Blot analysis of DPH2 expression in transfected 293T cell line by DPH2 monoclonal antibody (M07), clone 3F7.

Lane 1: DPH2 transfected lysate (Predicted MW: 52.1 KDa).

Lane 2: Non-transfected lysate.

[Protocol Download](#)

- Western Blot (Recombinant protein)

[Protocol Download](#)

- Sandwich ELISA (Recombinant protein)

Detection limit for recombinant GST tagged DPH2 is 3 ng/ml as a capture antibody.

[Protocol Download](#)

- ELISA

- Immunofluorescence

Immunofluorescence of monoclonal antibody to DPH2 on HeLa cell . [antibody concentration 10 ug/ml]

Gene Info — DPH2

Entrez GeneID [1802](#)

GeneBank Accession# [BC016956](#)

Protein Accession# [AAH16956](#)

Gene Name DPH2

Gene Alias DPH2L2

Gene Description DPH2 homolog (S. cerevisiae)

Omim ID [603456](#)

Gene Ontology [Hyperlink](#)

Gene Summary

This gene is one of two human genes similar to the yeast gene dph2. The yeast gene was identified by its ability to complement a diphthamide mutant strain, and thus probably functions in diphthamide biosynthesis. Diphthamide is a post-translationally modified histidine residue present in elongation factor 2 (EF2) that is the target of diphtheria toxin ADP-ribosylation. Two transcript variants encoding different isoforms have been found for this gene. [provided by RefSeq]

Other Designations

DPH2-like 2|OTTHUMP00000010007|diphthamide biosynthesis protein 2|diphthamide biosynthesis-like protein 2|diphtheria toxin resistance protein required for diphthamide biosynthesis-like 2

Disease

- [Tobacco Use Disorder](#)