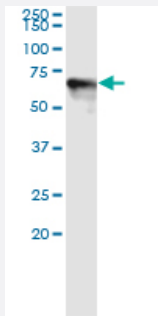


DOK1 (Human) IP-WB Antibody Pair

Catalog # H00001796-PW2

Size 1 Set

Applications



Immunoprecipitation of DOK1 transfected lysate using rabbit polyclonal anti-DOK1 and Protein A Magnetic Bead ([U0007](#)), and immunoblotted with mouse purified polyclonal anti-DOK1.

Specification

Product Description	This IP-WB antibody pair set comes with one antibody for immunoprecipitation and another to detect the precipitated protein in western blot.
Reactivity	Human
Quality Control Testing	Immunoprecipitation-Western Blot (IP-WB) Immunoprecipitation of DOK1 transfected lysate using rabbit polyclonal anti-DOK1 and Protein A Magnetic Bead (U0007), and immunoblotted with mouse purified polyclonal anti-DOK1.
Supplied Product	Antibody pair set content: 1. Antibody pair for IP: rabbit polyclonal anti-DOK1 (300 ul) 2. Antibody pair for WB: mouse purified polyclonal anti-DOK1 (50 ug)
Storage Instruction	Store reagents of the antibody pair set at -20°C or lower. Please aliquot to avoid repeated freeze thaw cycle. Reagents should be returned to -20°C storage immediately after use.

Applications

- Immunoprecipitation-Western Blot

[Protocol Download](#)

Gene Info — DOK1

Entrez GeneID	1796
Gene Name	DOK1
Gene Alias	MGC117395, MGC138860, P62DOK
Gene Description	docking protein 1, 62kDa (downstream of tyrosine kinase 1)
Omim ID	602919
Gene Ontology	Hyperlink
Gene Summary	Docking protein 1 is constitutively tyrosine phosphorylated in hematopoietic progenitors isolated from chronic myelogenous leukemia (CML) patients in the chronic phase. It may be a critical substrate for p210(bcr/abl), a chimeric protein whose presence is associated with CML. Docking protein 1 contains a putative pleckstrin homology domain at the amino terminus and ten PXXP SH3 recognition motifs. Docking protein 2 binds p120 (RasGAP) from CML cells. It has been postulated to play a role in mitogenic signaling. [provided by RefSeq]
Other Designations	Downstream of tyrosine kinase 1 docking protein 1 docking protein 1 (downstream of tyrosine kinase 1) docking protein 1, 62kD (downstream of tyrosine kinase 1)

Disease

- [Genetic Predisposition to Disease](#)
- [Leukemia](#)