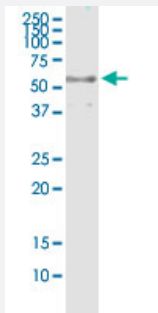


# DYNC1LI2 (Human) IP-WB Antibody Pair

Catalog # H00001783-PW2

Size 1 Set

## Applications



Immunoprecipitation of DYNC1LI2 transfected lysate using rabbit polyclonal anti-DYNC1LI2 and Protein A Magnetic Bead ([U0007](#)), and immunoblotted with mouse purified polyclonal anti-DYNC1LI2.

## Specification

<b>Product Description</b>	This IP-WB antibody pair set comes with one antibody for immunoprecipitation and another to detect the precipitated protein in western blot.
<b>Reactivity</b>	Human
<b>Quality Control Testing</b>	Immunoprecipitation-Western Blot (IP-WB) Immunoprecipitation of DYNC1LI2 transfected lysate using rabbit polyclonal anti-DYNC1LI2 and Protein A Magnetic Bead ( <a href="#">U0007</a> ), and immunoblotted with mouse purified polyclonal anti-DYNC1LI2.
<b>Supplied Product</b>	Antibody pair set content: 1. Antibody pair for IP: rabbit polyclonal anti-DYNC1LI2 (300 ul) 2. Antibody pair for WB: mouse purified polyclonal anti-DYNC1LI2 (50 ug)
<b>Storage Instruction</b>	Store reagents of the antibody pair set at -20°C or lower. Please aliquot to avoid repeated freeze thaw cycle. Reagents should be returned to -20°C storage immediately after use.

## Applications

- Immunoprecipitation-Western Blot

[Protocol Download](#)

## Gene Info — DYNC1LI2

Entrez GeneID	<a href="#">1783</a>
Gene Name	DYNC1LI2
Gene Alias	DNCL12, LIC2
Gene Description	dynein, cytoplasmic 1, light intermediate chain 2
Omim ID	<a href="#">611406</a>
Gene Ontology	<a href="#">Hyperlink</a>
Gene Summary	Cytoplasmic dynein is a microtubule-associated motor protein (Hughes et al., 1995 [PubMed 773 8094]). See DYNC1H1 (MIM 600112) for general information about dyneins.[supplied by OMIM
Other Designations	dynein, cytoplasmic, light intermediate polypeptide 2