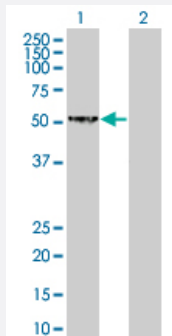


# DNASE2 293T Cell Transient Overexpression Lysate(Denatured)

Catalog # H00001777-T01

Size 100 uL

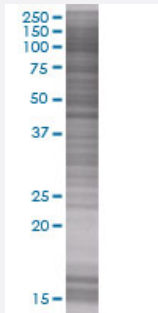
## Applications



### Western Blot

Lane 1: DNASE2 transfected lysate ( 39.6 kDa)

Lane 2: Non-transfected lysate.



### SDS-PAGE Gel

DNASE2 transfected lysate.

## Specification

Transfected Cell Line	293T
Plasmid	pCMV-DNASE2 full-length
Host	Human
Theoretical MW (kDa)	39.71
Interspecies Antigen Sequence	Mouse (72); Rat (73)

**Quality Control Testing**

Transient overexpression cell lysate was tested with Anti-DNASE2 antibody ([H00001777-B01](#)) by Western Blots.  
Western Blot  
Lane 1: DNASE2 transfected lysate ( 39.6 KDa)  
Lane 2: Non-transfected lysate.  
SDS-PAGE Gel  
DNASE2 transfected lysate.

**Storage Buffer**

1X Sample Buffer (50 mM Tris-HCl, 2% SDS, 10% glycerol, 300 mM 2-mercaptoethanol, 0.01% Bromophenol blue)

**Storage Instruction**

Store at -80°C. Aliquot to avoid repeated freezing and thawing.

## Applications

- Western Blot

## Gene Info — DNASE2

Entrez GeneID [1777](#)

GeneBank Accession# [NM\\_001375](#)

Protein Accession# [NP\\_001366](#)

Gene Name DNASE2

Gene Alias DNASE2A, DNL, DNL2

Gene Description deoxyribonuclease II, lysosomal

Omim ID [126350](#)

Gene Ontology [Hyperlink](#)

**Gene Summary**

This gene encodes a member of the DNase family. The protein, located in the lysosome, hydrolyzes DNA under acidic conditions and mediates the breakdown of DNA during erythropoiesis and apoptosis. Two codominant alleles have been characterized, DNASE2\*L (low activity) and DNASE2\*H (high activity), that differ at one nucleotide in the promoter region. The DNASE2\*H allele is represented in this record. [provided by RefSeq]

**Other Designations**

DNase II alpha|DNase II, lysosomal|R31240\_2|acid DNase

## Pathway

- [Lysosome](#)

## Disease

- [Arthritis](#)
- [Genetic Predisposition to Disease](#)
- [Lupus Erythematosus](#)
- [Nephritis](#)