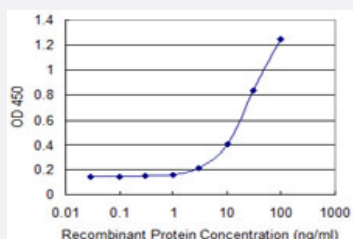


# DMP1 monoclonal antibody (M01), clone 1D4

Catalog # H00001758-M01

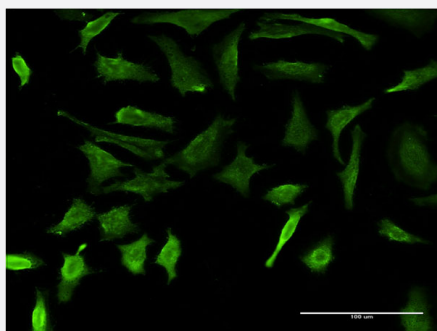
Size 100 ug

## Applications



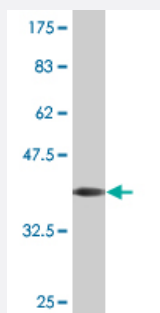
### Sandwich ELISA (Recombinant protein)

Detection limit for recombinant GST tagged DMP1 is 1 ng/ml as a capture antibody.



### Immunofluorescence

Immunofluorescence of monoclonal antibody to DMP1 on HeLa cell . [antibody concentration 10 ug/ml]



Western Blot detection against Immunogen (37.84 KDa) .

## Specification

### Product Description

Mouse monoclonal antibody raised against a partial recombinant DMP1.

Immunogen	DMP1 (NP_004398.1, 221 a.a. ~ 330 a.a) partial recombinant protein with GST tag. MW of the GST tag alone is 26 KDa.
Sequence	ESIRSERGNSRMNSAGMKSKESGENSEQANTQDSGGSQLLEHPSRKIFRKSRISEEDDRSELDD NNTMEEVKSDSTENSNSRDTGLSQPRRDSKGDSQEDSKENLSQEEES
Host	Mouse
Reactivity	Human
Interspecies Antigen Sequence	Mouse (49); Rat (50)
Isotype	IgG2b Kappa
Quality Control Testing	Antibody Reactive Against Recombinant Protein. Western Blot detection against Immunogen (37.84 KDa) .
Storage Buffer	In 1x PBS, pH 7.4
Storage Instruction	Store at -20°C or lower. Aliquot to avoid repeated freezing and thawing.

## Applications

- Western Blot (Recombinant protein)

[Protocol Download](#)

- Sandwich ELISA (Recombinant protein)

Detection limit for recombinant GST tagged DMP1 is 1 ng/ml as a capture antibody.

[Protocol Download](#)

- ELISA

- Immunofluorescence

Immunofluorescence of monoclonal antibody to DMP1 on HeLa cell . [antibody concentration 10 ug/ml]

## Gene Info — DMP1

Entrez GeneID [1758](#)

GeneBank Accession# [NM\\_004407](#)

Protein Accession#	<a href="#">NP_004398.1</a>
Gene Name	DMP1
Gene Alias	DMP-1
Gene Description	dentin matrix acidic phosphoprotein 1
Omim ID	<a href="#">600980</a>
Gene Ontology	<a href="#">Hyperlink</a>
Gene Summary	Dentin matrix acidic phosphoprotein is an extracellular matrix protein and a member of the small integrin binding ligand N-linked glycoprotein family. This protein, which is critical for proper mineralization of bone and dentin, is present in diverse cells of bone and tooth tissues. The protein contains a large number of acidic domains, multiple phosphorylation sites, a functional arg-gly-asp cell attachment sequence, and a DNA binding domain. In undifferentiated osteoblasts it is primarily a nuclear protein that regulates the expression of osteoblast-specific genes. During osteoblast maturation the protein becomes phosphorylated and is exported to the extracellular matrix, where it orchestrates mineralized matrix formation. Mutations in the gene are known to cause autosomal recessive hypophosphatemia, a disease that manifests as rickets and osteomalacia. The gene structure is conserved in mammals. Two transcript variants encoding different isoforms have been described for this gene. [provided by RefSeq]
Other Designations	dentin matrix protein 1

## Disease

- [Cardiovascular Diseases](#)
- [Diabetes Mellitus](#)
- [Edema](#)