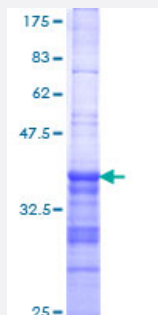


# DLX6 (Human) Recombinant Protein (Q01)

Catalog # H00001750-Q01

Size 25 ug, 10 ug

## Applications



## Specification

<b>Product Description</b>	Human DLX6 partial ORF ( XP_376652, 71 a.a. - 160 a.a.) recombinant protein with GST-tag at N-terminal.
<b>Sequence</b>	PYASGGGNSYNHRSLAAYPYMSHSQHSPYLQSYHNSSAAAQTRGDDTDQQKTTVIENGEIRFNGK GKKIRKPRTIYSSLQLQALNHRFQQ
<b>Host</b>	Wheat Germ (in vitro)
<b>Theoretical MW (kDa)</b>	35.64
<b>Preparation Method</b>	<a href="#">in vitro wheat germ expression system</a>
<b>Purification</b>	Glutathione Sepharose 4 Fast Flow
<b>Quality Control Testing</b>	12.5% SDS-PAGE Stained with Coomassie Blue.
<b>Storage Buffer</b>	50 mM Tris-HCl, 10 mM reduced Glutathione, pH=8.0 in the elution buffer.
<b>Storage Instruction</b>	Store at -80°C. Aliquot to avoid repeated freezing and thawing.
<b>Note</b>	Best use within three months from the date of receipt of this protein.

## Applications

- Enzyme-linked Immunoabsorbent Assay
- Western Blot (Recombinant protein)
- Antibody Production
- Protein Array

## Gene Info — DLX6

**Entrez GeneID** [1750](#)

**GeneBank Accession#** [XM\\_376652](#)

**Protein Accession#** [XP\\_376652](#)

**Gene Name** DLX6

**Gene Alias** MGC125282, MGC125283, MGC125284, MGC125285

**Gene Description** distal-less homeobox 6

**Omim ID** [600030](#)

**Gene Ontology** [Hyperlink](#)

**Gene Summary** This gene encodes a member of a homeobox transcription factor gene family similar to the Drosophila distal-less gene. This family is comprised of at least 6 different members that encode proteins with roles in forebrain and craniofacial development. This gene is in a tail-to-tail configuration with another member of the family on the long arm of chromosome 7. [provided by RefSeq]

**Other Designations** distal-less homeo box 6

## Disease

- [Cleft Lip](#)
- [Cleft Palate](#)