

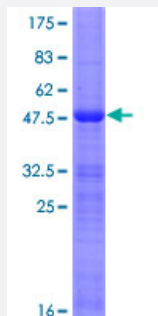
Full-Length

DLX6 (Human) Recombinant Protein (P01)

Catalog # H00001750-P01

Size 25 ug, 10 ug

Applications



Specification

Product Description	Human DLX6 full-length ORF (AAH69363.1, 1 a.a. - 175 a.a.) recombinant protein with GST-tag at N-terminal.
Sequence	MSHSQHSPYLQSYHNSSAAAQTRGDDTDQQKTTVIENG EIRFNGKGKKIRKPRTIYSSLQLQALNH RFQQTQYLALPERAELAASLGLTQTQVKIWFQNKRSKFKLLKQGSNPHE SDPLQGSAALSPRS PALPPVWDV SASAKGVSMPPNSYMPGYSHWYSSPHQDTMQR PQMM
Host	Wheat Germ (in vitro)
Theoretical MW (kDa)	46.1
Preparation Method	in vitro wheat germ expression system
Purification	Glutathione Sepharose 4 Fast Flow
Quality Control Testing	12.5% SDS-PAGE Stained with Coomassie Blue.
Storage Buffer	50 mM Tris-HCl, 10 mM reduced Glutathione, pH=8.0 in the elution buffer.
Storage Instruction	Store at -80°C. Aliquot to avoid repeated freezing and thawing.
Note	Best use within three months from the date of receipt of this protein.

Applications

- Enzyme-linked Immunoabsorbent Assay
- Western Blot (Recombinant protein)
- Antibody Production
- Protein Array

Gene Info — DLX6

Entrez GeneID	1750
GeneBank Accession#	BC069363.1
Protein Accession#	AAH69363.1
Gene Name	DLX6
Gene Alias	MGC125282, MGC125283, MGC125284, MGC125285
Gene Description	distal-less homeobox 6
Omim ID	600030
Gene Ontology	Hyperlink
Gene Summary	This gene encodes a member of a homeobox transcription factor gene family similar to the Drosophila distal-less gene. This family is comprised of at least 6 different members that encode proteins with roles in forebrain and craniofacial development. This gene is in a tail-to-tail configuration with another member of the family on the long arm of chromosome 7. [provided by RefSeq]
Other Designations	distal-less homeo box 6

Disease

- [Cleft Lip](#)
- [Cleft Palate](#)