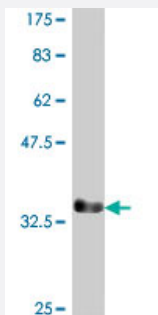


# DLX6 polyclonal antibody (A01)

Catalog # H00001750-A01

Size 50 uL

## Applications



Western Blot detection against Immunogen (36.01 KDa) .

## Specification

<b>Product Description</b>	Mouse polyclonal antibody raised against a partial recombinant DLX6.
<b>Immunogen</b>	DLX6 (XP_376652, 71 a.a. ~ 160 a.a) partial recombinant protein with GST tag.
<b>Sequence</b>	PYASGGGNSYNHRSLAAYPYMSHSQHSPYLQSYHNSSAAAQTRGDDTDQQKTTVIENGEIRFNGK GKKIRKPRTIYSSLQLQALNHRFQQ
<b>Host</b>	Mouse
<b>Reactivity</b>	Human
<b>Quality Control Testing</b>	Antibody Reactive Against Recombinant Protein. Western Blot detection against Immunogen (36.01 KDa) .
<b>Storage Buffer</b>	50 % glycerol
<b>Storage Instruction</b>	Store at -20°C or lower. Aliquot to avoid repeated freezing and thawing.

## Applications

- Western Blot (Recombinant protein)

[Protocol Download](#)

- ELISA

## Gene Info — DLX6

Entrez GeneID [1750](#)

GeneBank Accession# [XM\\_376652](#)

Protein Accession# [XP\\_376652](#)

Gene Name DLX6

Gene Alias MGC125282, MGC125283, MGC125284, MGC125285

Gene Description distal-less homeobox 6

Omim ID [600030](#)

Gene Ontology [Hyperlink](#)

**Gene Summary** This gene encodes a member of a homeobox transcription factor gene family similar to the Drosophila distal-less gene. This family is comprised of at least 6 different members that encode proteins with roles in forebrain and craniofacial development. This gene is in a tail-to-tail configuration with another member of the family on the long arm of chromosome 7. [provided by RefSeq]

**Other Designations** distal-less homeo box 6

## Disease

- [Cleft Lip](#)
- [Cleft Palate](#)