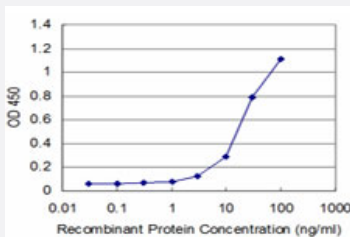


# DLX5 monoclonal antibody (M08), clone 2B6

Catalog # H00001749-M08

Size 100 ug

## Applications



### Sandwich ELISA (Recombinant protein)

Detection limit for recombinant GST tagged DLX5 is approximately 3ng/ml as a capture antibody.

## Specification

|                               |  |
|-------------------------------|--|
| Product Description           | Mouse monoclonal antibody raised against a partial recombinant DLX5.   |
| Immunogen                     | DLX5 (NP_005212, 1 a.a. ~ 110 a.a) partial recombinant protein with GST tag. MW of the GST tag alone is 26 KDa.    |
| Sequence                      | MTGVFDRRVPSIRSGDFQAPFQTSAAMHHPSQESPTLPESSATDSDYYSTGGAPHGYCSPTSA<br>SYGKALNPYQYQYHGVNGSAGSYPAKAYADYSYASSYHQYGGAYNR* |
| Host                          | Mouse  |
| Reactivity                    | Human  |
| Interspecies Antigen Sequence | Mouse (94); Rat (92)   |
| Isotype                       | IgG2b Kappa  |
| Quality Control Testing       | Antibody Reactive Against Recombinant Protein.   |
| Storage Buffer                | In 1x PBS, pH 7.4  |
| Storage Instruction           | Store at -20°C or lower. Aliquot to avoid repeated freezing and thawing.   |

## Applications

- Sandwich ELISA (Recombinant protein)

Detection limit for recombinant GST tagged DLX5 is approximately 3ng/ml as a capture antibody.

[Protocol Download](#)

- ELISA

## Gene Info — DLX5

|               |                      |
|---------------|----------------------|
| Entrez GeneID | <a href="#">1749</a> |
|---------------|----------------------|

|                     |                           |
|---------------------|---------------------------|
| GeneBank Accession# | <a href="#">NM_005221</a> |
|---------------------|---------------------------|

|                    |                           |
|--------------------|---------------------------|
| Protein Accession# | <a href="#">NP_005212</a> |
|--------------------|---------------------------|

|           |      |
|-----------|------|
| Gene Name | DLX5 |
|-----------|------|

|            |   |
|------------|---|
| Gene Alias | - |
|------------|---|

|                  |                        |
|------------------|------------------------|
| Gene Description | distal-less homeobox 5 |
|------------------|------------------------|

|         |                        |
|---------|------------------------|
| Omim ID | <a href="#">600028</a> |
|---------|------------------------|

|               |                           |
|---------------|---------------------------|
| Gene Ontology | <a href="#">Hyperlink</a> |
|---------------|---------------------------|

|              |  |
|--------------|--|
| Gene Summary | This gene encodes a member of a homeobox transcription factor gene family similar to the Drosophila distal-less gene. The encoded protein may play a role in bone development and fracture healing. Mutation in this gene, which is located in a tail-to-tail configuration with another member of the family on the long arm of chromosome 7, may be associated with split-hand/split-foot malformation. [provided by RefSeq] |
|--------------|--|

|                    |                         |
|--------------------|-------------------------|
| Other Designations | distal-less homeo box 5 |
|--------------------|-------------------------|

## Disease

- [Cleft Lip](#)
- [Cleft Palate](#)