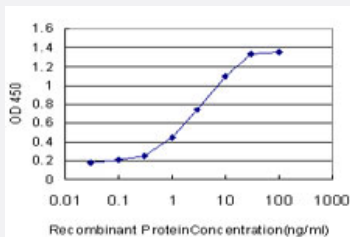


# DLX5 monoclonal antibody (M01), clone 1B3

Catalog # H00001749-M01

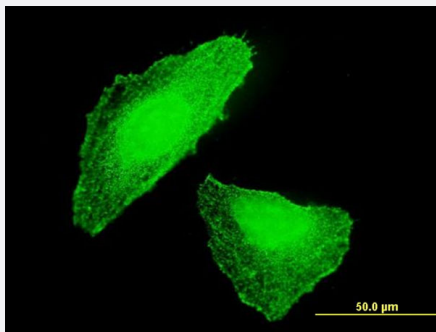
Size 100 ug

## Applications



### Sandwich ELISA (Recombinant protein)

Detection limit for recombinant GST tagged DLX5 is approximately 0.3ng/ml as a capture antibody.



### Immunofluorescence

Immunofluorescence of monoclonal antibody to DLX5 on HeLa cell . [antibody concentration 10 ug/ml]

## Specification

Product Description	Mouse monoclonal antibody raised against a partial recombinant DLX5.
Immunogen	DLX5 (NP_005212, 1 a.a. ~ 110 a.a) partial recombinant protein with GST tag. MW of the GST tag alone is 26 KDa.
Sequence	MTGVFDRRVPSIRSGDFQAPFQTSAAAMHHPSQESPTLPESATDSDYYSP TGGAPHGYCSPTSA SYGKALNPYQYQYHGVNGSAGSYPAKAYADYSYASSYHQYGGAYNR*
Host	Mouse
Reactivity	Human

**Interspecies Antigen Sequence**

Mouse (94); Rat (92)

**Isotype**

IgG2a Kappa

**Quality Control Testing**

Antibody Reactive Against Recombinant Protein.

**Storage Buffer**

In 1x PBS, pH 7.4

**Storage Instruction**

Store at -20°C or lower. Aliquot to avoid repeated freezing and thawing.

## Applications

- Sandwich ELISA (Recombinant protein)

Detection limit for recombinant GST tagged DLX5 is approximately 0.3ng/ml as a capture antibody.

[Protocol Download](#)

- ELISA

- Immunofluorescence

Immunofluorescence of monoclonal antibody to DLX5 on HeLa cell . [antibody concentration 10 ug/ml]

## Gene Info — DLX5

**Entrez GeneID**[1749](#)**GeneBank Accession#**[NM\\_005221](#)**Protein Accession#**[NP\\_005212](#)**Gene Name**

DLX5

**Gene Alias**

-

**Gene Description**

distal-less homeobox 5

**Omim ID**[600028](#)**Gene Ontology**[Hyperlink](#)

**Gene Summary**

This gene encodes a member of a homeobox transcription factor gene family similar to the Drosophila distal-less gene. The encoded protein may play a role in bone development and fracture healing. Mutation in this gene, which is located in a tail-to-tail configuration with another member of the family on the long arm of chromosome 7, may be associated with split-hand/split-foot malformation. [provided by RefSeq]

**Other Designations**

distal-less homeo box 5

**Disease**

- [Cleft Lip](#)
- [Cleft Palate](#)