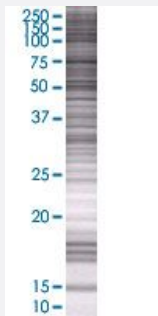


# DLX4 293T Cell Transient Overexpression Lysate(Denatured)

Catalog # H00001748-T01

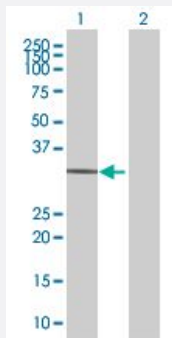
Size 100 uL

## Applications



### SDS-PAGE Gel

DLX4 transfected lysate.



### Western Blot

Lane 1: DLX4 transfected lysate ( 26.51 KDa)

Lane 2: Non-transfected lysate.

## Specification

**Transfected Cell Line** 293T

**Plasmid** pCMV-DLX4 full-length

**Host** Human

**Theoretical MW (kDa)** 26.51

**Quality Control Testing** Transient overexpression cell lysate was tested with Anti-DLX4 antibody ([H00001748-B01](#)) by Western Blots.  
SDS-PAGE Gel  
DLX4 transfected lysate.  
Western Blot  
Lane 1: DLX4 transfected lysate ( 26.51 KDa)  
Lane 2: Non-transfected lysate.

**Storage Buffer**

1X Sample Buffer (50 mM Tris-HCl, 2% SDS, 10% glycerol, 300 mM 2-mercaptoethanol, 0.01% Bromophenol blue)

**Storage Instruction**

Store at -80°C. Aliquot to avoid repeated freezing and thawing.

## Applications

- Western Blot

## Gene Info — DLX4

**Entrez GeneID**[1748](#)**GeneBank Accession#**[NM\\_138281.1](#)**Protein Accession#**[NP\\_612138.1](#)**Gene Name**

DLX4

**Gene Alias**

BP1, DLX7, DLX8, DLX9

**Gene Description**

distal-less homeobox 4

**Omim ID**[601911](#)**Gene Ontology**[Hyperlink](#)**Gene Summary**

Many vertebrate homeo box-containing genes have been identified on the basis of their sequence similarity with Drosophila developmental genes. Members of the Dlx gene family contain a homeo box that is related to that of Distal-less (Dll), a gene expressed in the head and limbs of the developing fruit fly. The Distal-less (Dlx) family of genes comprises at least 6 different members, DLX1-DLX6. The DLX proteins are postulated to play a role in forebrain and craniofacial development. Three transcript variants have been described for this gene, however, the full length nature of one variant has not been described. Studies of the two splice variants revealed that one encoded isoform functions as a repressor of the beta-globin gene while the other isoform lacks that function. [provided by RefSeq]

**Other Designations**

beta protein 1|distal-less homeo box 7|distal-less homeo box 9

## Disease

- [Cleft Lip](#)
- [Cleft Palate](#)

- [Tooth Abnormalities](#)