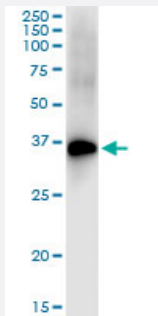


DLX4 (Human) IP-WB Antibody Pair

Catalog # H00001748-PW2

Size 1 Set

Applications



Immunoprecipitation of DLX4 transfected lysate using rabbit polyclonal anti-DLX4 and Protein A Magnetic Bead ([U0007](#)), and immunoblotted with mouse polyclonal anti-DLX4.

Specification

Product Description	This IP-WB antibody pair set comes with one antibody for immunoprecipitation and another to detect the precipitated protein in western blot.
Reactivity	Human
Quality Control Testing	Immunoprecipitation-Western Blot (IP-WB) Immunoprecipitation of DLX4 transfected lysate using rabbit polyclonal anti-DLX4 and Protein A Magnetic Bead (U0007), and immunoblotted with mouse polyclonal anti-DLX4.
Supplied Product	Antibody pair set content: 1. Antibody pair for IP: rabbit polyclonal anti-DLX4 (300 ul) 2. Antibody pair for WB: mouse polyclonal anti-DLX4 (50 ul)
Storage Instruction	Store reagents of the antibody pair set at -20°C or lower. Please aliquot to avoid repeated freeze thaw cycle. Reagents should be returned to -20°C storage immediately after use.

Applications

- Immunoprecipitation-Western Blot

[Protocol Download](#)

Gene Info — DLX4

Entrez GeneID [1748](#)**Gene Name** DLX4**Gene Alias** BP1, DLX7, DLX8, DLX9**Gene Description** distal-less homeobox 4**Omim ID** [601911](#)**Gene Ontology** [Hyperlink](#)

Gene Summary

Many vertebrate homeo box-containing genes have been identified on the basis of their sequence similarity with Drosophila developmental genes. Members of the Dlx gene family contain a homeo box that is related to that of Distal-less (Dll), a gene expressed in the head and limbs of the developing fruit fly. The Distal-less (Dlx) family of genes comprises at least 6 different members, DLX1-DLX6. The DLX proteins are postulated to play a role in forebrain and craniofacial development. Three transcript variants have been described for this gene, however, the full length nature of one variant has not been described. Studies of the two splice variants revealed that one encoded isoform functions as a repressor of the beta-globin gene while the other isoform lacks that function. [provided by RefSeq]

Other Designations beta protein 1|distal-less homeo box 7|distal-less homeo box 9

Disease

- [Cleft Lip](#)
- [Cleft Palate](#)
- [Tooth Abnormalities](#)