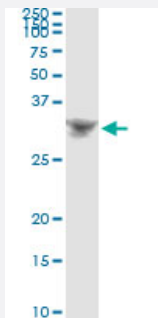


DLX4 (Human) IP-WB Antibody Pair

Catalog # H00001748-PW1

Size 1 Set

Applications



Immunoprecipitation of DLX4 transfected lysate using mouse monoclonal anti-DLX4 and Protein A Magnetic Bead ([U0007](#)), and immunoblotted with rabbit polyclonal anti-DLX4.

Specification

Product Description	This IP-WB antibody pair set comes with one antibody for immunoprecipitation and another to detect the precipitated protein in western blot.
Reactivity	Human
Quality Control Testing	Immunoprecipitation-Western Blot (IP-WB) Immunoprecipitation of DLX4 transfected lysate using mouse monoclonal anti-DLX4 and Protein A Magnetic Bead (U0007), and immunoblotted with rabbit polyclonal anti-DLX4.
Supplied Product	Antibody pair set content: 1. Antibody pair for IP: mouse monoclonal anti-DLX4 (300 ug) 2. Antibody pair for WB: rabbit polyclonal anti-DLX4 (50 ul)
Storage Instruction	Store reagents of the antibody pair set at -20°C or lower. Please aliquot to avoid repeated freeze thaw cycle. Reagents should be returned to -20°C storage immediately after use.

Applications

- Immunoprecipitation-Western Blot

[Protocol Download](#)

Gene Info — DLX4

Entrez GeneID	1748
Gene Name	DLX4
Gene Alias	BP1, DLX7, DLX8, DLX9
Gene Description	distal-less homeobox 4
Omim ID	601911
Gene Ontology	Hyperlink
Gene Summary	<p>Many vertebrate homeo box-containing genes have been identified on the basis of their sequence similarity with Drosophila developmental genes. Members of the Dlx gene family contain a homeo box that is related to that of Distal-less (Dll), a gene expressed in the head and limbs of the developing fruit fly. The Distal-less (Dlx) family of genes comprises at least 6 different members, DLX1-DLX6. The DLX proteins are postulated to play a role in forebrain and craniofacial development. Three transcript variants have been described for this gene, however, the full length nature of one variant has not been described. Studies of the two splice variants revealed that one encoded isoform functions as a repressor of the beta-globin gene while the other isoform lacks that function. [provided by RefSeq]</p>
Other Designations	beta protein 1 distal-less homeo box 7 distal-less homeo box 9

Disease

- [Cleft Lip](#)
- [Cleft Palate](#)
- [Tooth Abnormalities](#)