

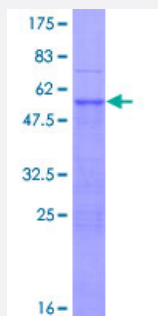
Full-Length

## DLX4 (Human) Recombinant Protein (P01)

Catalog # H00001748-P01

Size 25 ug, 10 ug

### Applications



### Specification

#### Product Description

Human DLX4 full-length ORF ( NP\_612138.1, 1 a.a. - 240 a.a.) recombinant protein with GST-tag at N-terminal.

#### Sequence

MTSLPCPLPGRDASKAVFPDLAPVPSVAAAYPLGLSPTTAASPNLSYSRPYGHLLSYPYTEPANP  
GDSYLSCQQPAALSQPLCGPAEHPQELEADSEKPRLSPEPSERRPQAPAKKLRKPRTIYSSLQL  
QHLNQRFQHTQYLALPERAQLAAQLGLTQTQVKIWFQNKRSKYKKLLQNSGGQEGDFPGRIFS  
VSPCSPPLPSLWDLPKAGTLPTSGYGNSFGAWYQHSSDVLASPQMM

#### Host

Wheat Germ (in vitro)

#### Theoretical MW (kDa)

52.7

#### Preparation Method

[in vitro wheat germ expression system](#)

#### Purification

Glutathione Sepharose 4 Fast Flow

#### Quality Control Testing

12.5% SDS-PAGE Stained with Coomassie Blue.

#### Storage Buffer

50 mM Tris-HCl, 10 mM reduced Glutathione, pH=8.0 in the elution buffer.

#### Storage Instruction

Store at -80°C. Aliquot to avoid repeated freezing and thawing.

#### Note

Best use within three months from the date of receipt of this protein.

## Applications

- Enzyme-linked Immunoabsorbent Assay
- Western Blot (Recombinant protein)
- Antibody Production
- Protein Array

## Gene Info — DLX4

Entrez GeneID [1748](#)

GeneBank Accession# [NM\\_138281.1](#)

Protein Accession# [NP\\_612138.1](#)

Gene Name DLX4

Gene Alias BP1, DLX7, DLX8, DLX9

Gene Description distal-less homeobox 4

Omim ID [601911](#)

Gene Ontology [Hyperlink](#)

**Gene Summary** Many vertebrate homeo box-containing genes have been identified on the basis of their sequence similarity with Drosophila developmental genes. Members of the Dlx gene family contain a homeo box that is related to that of Distal-less (Dll), a gene expressed in the head and limbs of the developing fruit fly. The Distal-less (Dlx) family of genes comprises at least 6 different members, DLX1-DLX6. The DLX proteins are postulated to play a role in forebrain and craniofacial development. Three transcript variants have been described for this gene, however, the full length nature of one variant has not been described. Studies of the two splice variants revealed that one encoded isoform functions as a repressor of the beta-globin gene while the other isoform lacks that function. [provided by RefSeq]

**Other Designations** beta protein 1|distal-less homeo box 7|distal-less homeo box 9

## Disease

- [Cleft Lip](#)

- [Cleft Palate](#)
- [Tooth Abnormalities](#)