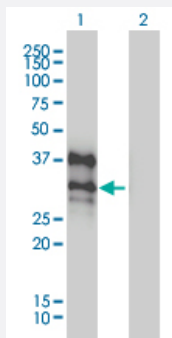


DLX4 monoclonal antibody (M01), clone 1F11

Catalog # H00001748-M01

Size 100 ug

Applications

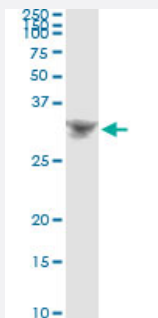


Western Blot (Transfected lysate)

Western Blot analysis of DLX4 expression in transfected 293T cell line by DLX4 monoclonal antibody (M01), clone 1F11.

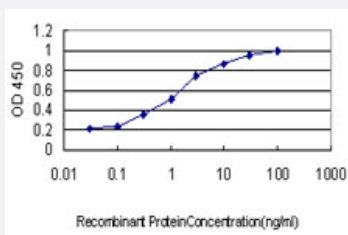
Lane 1: DLX4 transfected lysate (26 KDa).

Lane 2: Non-transfected lysate.



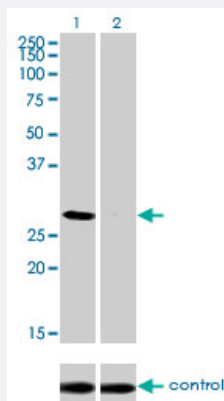
Immunoprecipitation

Immunoprecipitation of DLX4 transfected lysate using anti-DLX4 monoclonal antibody and Protein A Magnetic Bead, and immunoblotted with DLX4 MaxPab rabbit polyclonal antibody.



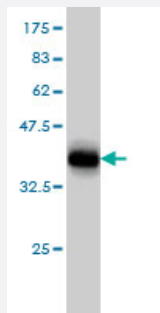
Sandwich ELISA (Recombinant protein)

Detection limit for recombinant GST tagged DLX4 is approximately 0.03ng/ml as a capture antibody.



RNAi Knockdown (Antibody validated)

Western blot analysis of DLX4 over-expressed 293 cell line, cotransfected with DLX4 Validated Chimera RNAi (Cat # H00001748-R01V) (Lane 2) or non-transfected control (Lane 1). Blot probed with DLX4 monoclonal antibody (M01), clone 1F11 (Cat # H00001748-M01). GAPDH (36.1 kDa) used as specificity and loading control.



Western Blot detection against Immunogen (36.52 KDa) .

Specification

Product Description	Mouse monoclonal antibody raised against a partial recombinant DLX4.
Immunogen	DLX4 (AAH16145, 1 a.a. ~ 98 a.a) partial recombinant protein with GST tag. MW of the GST tag alone is 26 KDa.
Sequence	MTSLPCPLPGRDASKAVFPDLAPVPSVAAAYPLGLSPTTAASPNLSYSRPYGHLLSYPYTEPANP GDSYLSCQQAALSQPLCGPAEHPQELEADSEK
Host	Mouse
Reactivity	Human
Isotype	IgG2a Kappa
Quality Control Testing	Antibody Reactive Against Recombinant Protein. Western Blot detection against Immunogen (36.52 KDa) .
Storage Buffer	In 1x PBS, pH 7.4
Storage Instruction	Store at -20°C or lower. Aliquot to avoid repeated freezing and thawing.

Applications

- Western Blot (Transfected lysate)

Western Blot analysis of DLX4 expression in transfected 293T cell line by DLX4 monoclonal antibody (M01), clone 1F11.

Lane 1: DLX4 transfected lysate(26 KDa).

Lane 2: Non-transfected lysate.

[Protocol Download](#)

- Western Blot (Recombinant protein)

[Protocol Download](#)

- Immunoprecipitation

Immunoprecipitation of DLX4 transfected lysate using anti-DLX4 monoclonal antibody and Protein A Magnetic Bead, and immunoblotted with DLX4 MaxPab rabbit polyclonal antibody.

[Protocol Download](#)

- Sandwich ELISA (Recombinant protein)

Detection limit for recombinant GST tagged DLX4 is approximately 0.03ng/ml as a capture antibody.

[Protocol Download](#)

- ELISA

- RNAi Knockdown (Antibody validated)

Western blot analysis of DLX4 over-expressed 293 cell line, cotransfected with DLX4 Validated Chimera RNAi (Cat # H00001748-R01V) (Lane 2) or non-transfected control (Lane 1). Blot probed with DLX4 monoclonal antibody (M01), clone 1F11 (Cat # H00001748-M01). GAPDH (36.1 kDa) used as specificity and loading control.

[Protocol Download](#)

Gene Info — DLX4

Entrez GeneID	1748
---------------	----------------------

GeneBank Accession#	BC016145
---------------------	--------------------------

Protein Accession#	AAH16145
--------------------	--------------------------

Gene Name	DLX4
-----------	------

Gene Alias	BP1, DLX7, DLX8, DLX9
Gene Description	distal-less homeobox 4
Omim ID	601911
Gene Ontology	Hyperlink
Gene Summary	<p>Many vertebrate homeo box-containing genes have been identified on the basis of their sequence similarity with Drosophila developmental genes. Members of the Dlx gene family contain a homeo box that is related to that of Distal-less (Dll), a gene expressed in the head and limbs of the developing fruit fly. The Distal-less (Dlx) family of genes comprises at least 6 different members, DLX1-DLX6. The DLX proteins are postulated to play a role in forebrain and craniofacial development. Three transcript variants have been described for this gene, however, the full length nature of one variant has not been described. Studies of the two splice variants revealed that one encoded isoform functions as a repressor of the beta-globin gene while the other isoform lacks that function. [provided by RefSeq]</p>
Other Designations	beta protein 1 distal-less homeo box 7 distal-less homeo box 9

Publication Reference

- [DLX4 is associated with orofacial clefting and abnormal jaw development.](#)

Wu D, Mandal S, Choi A, Anderson A, Prochazkova M, Perry H, Gil-Da-Silva-Lopes VL, Lao R, Wan E, Tang PL, Kwok PY, Klein O, Zhuan B, Slavotinek AM.

Human Molecular Genetics 2015 Aug; 24(15):4340.

Application: IF, WB-Tr, Human, HeLa cells

- [Homeodomain protein DLX4 counteracts key transcriptional control mechanisms of the TGF- \$\beta\$ 1 cytosolic program and blocks the antiproliferative effect of TGF- \$\beta\$ 1.](#)

Trinh BQ, Barengo N, Naora H.

Oncogene 2011 Jun; 30(24):2718.

Application: WB, Human, MDA-MB-468, HepG2 cells

- [A homeobox gene related to Drosophila distal-less promotes ovarian tumorigenicity by inducing expression of vascular endothelial growth factor and fibroblast growth factor-2.](#)

Hara F, Samuel S, Liu J, Rosen D, Langley RR, Naora H.

The American Journal of Pathology 2007 May; 170(5):1594.

Application: WB, Human, Human epithelial ovarian tumors, A2780 DLX4-2, ES-2 DLX4-10 cells

Disease

- [Cleft Lip](#)
- [Cleft Palate](#)
- [Tooth Abnormalities](#)