

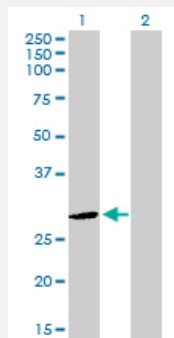
MaxPab®

## DLX4 purified MaxPab rabbit polyclonal antibody (D01P)

Catalog # H00001748-D01P

Size 100 ug

### Applications



#### Western Blot (Transfected lysate)

Western Blot analysis of DLX4 expression in transfected 293T cell line ([H00001748-T01](#)) by DLX4 MaxPab polyclonal antibody.

Lane 1: DLX4 transfected lysate(26.30 KDa).

Lane 2: Non-transfected lysate.

### Specification

Product Description	Rabbit polyclonal antibody raised against a full-length human DLX4 protein.
Immunogen	DLX4 (NP_612138.1, 1 a.a. ~ 240 a.a) full-length human protein.
Sequence	MTSLPCPLPGRDASKAVFPDLAPVPSVAAAYPLGLSPTTAASPNLSYSRPYGHLLSYPYTEPANP GDSYLSCQQPAALSQPLCGPAEHPQELEADSEKPRLSPEPSERRPQAPAKLRKPRTIYSSLQL QHLNQRFQHTQYLALPERAQLAAQLGLTQTQVKIMWFQNKRSKYKKLLKQNSGGQEGDFPGRFVS VSPCSPPLPSLWDLPKAGTLPTSGYGNSFGAWYQHHSSDVLASPQMM
Host	Rabbit
Reactivity	Human
Quality Control Testing	Antibody reactive against mammalian transfected lysate.
Storage Buffer	In 1x PBS, pH 7.4
Storage Instruction	Store at -20°C or lower. Aliquot to avoid repeated freezing and thawing.

## Applications

- Western Blot (Transfected lysate)

Western Blot analysis of DLX4 expression in transfected 293T cell line ([H00001748-T01](#)) by DLX4 MaxPab polyclonal antibody.

Lane 1: DLX4 transfected lysate(26.30 KDa).

Lane 2: Non-transfected lysate.

[Protocol Download](#)

## Gene Info — DLX4

Entrez GeneID [1748](#)

GeneBank Accession# [NM\\_138281.1](#)

Protein Accession# [NP\\_612138.1](#)

Gene Name DLX4

Gene Alias BP1, DLX7, DLX8, DLX9

Gene Description distal-less homeobox 4

Omim ID [601911](#)

Gene Ontology [Hyperlink](#)

**Gene Summary** Many vertebrate homeo box-containing genes have been identified on the basis of their sequence similarity with Drosophila developmental genes. Members of the Dlx gene family contain a homeo box that is related to that of Distal-less (Dll), a gene expressed in the head and limbs of the developing fruit fly. The Distal-less (Dlx) family of genes comprises at least 6 different members, DLX1-DLX6. The DLX proteins are postulated to play a role in forebrain and craniofacial development. Three transcript variants have been described for this gene, however, the full length nature of one variant has not been described. Studies of the two splice variants revealed that one encoded isoform functions as a repressor of the beta-globin gene while the other isoform lacks that function. [provided by RefSeq]

**Other Designations** beta protein 1|distal-less homeo box 7|distal-less homeo box 9

## Disease

- [Cleft Lip](#)

- [Cleft Palate](#)
- [Tooth Abnormalities](#)