

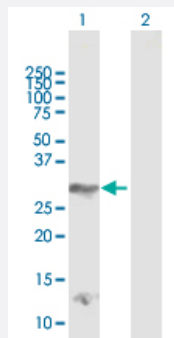
MaxPab®

DLX4 MaxPab rabbit polyclonal antibody (D01)

Catalog # H00001748-D01

Size 100 uL

Applications

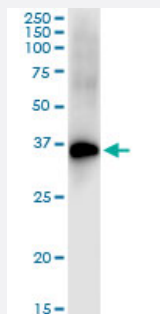


Western Blot (Transfected lysate)

Western Blot analysis of DLX4 expression in transfected 293T cell line ([H00001748-T01](#)) by DLX4 MaxPab polyclonal antibody.

Lane 1: DLX4 transfected lysate(26.30 kDa).

Lane 2: Non-transfected lysate.



Immunoprecipitation

Immunoprecipitation of DLX4 transfected lysate using anti-DLX4 MaxPab rabbit polyclonal antibody and Protein A Magnetic Bead, and immunoblotted with DLX4 MaxPab mouse polyclonal antibody (B01) ([H00001748-B01](#)).

Specification

Product Description	Rabbit polyclonal antibody raised against a full-length human DLX4 protein.
Immunogen	DLX4 (NP_612138.1, 1 a.a. ~ 240 a.a) full-length human protein.
Sequence	MTSLPCPLPGRDASKAVFPDLAPVPSVAAAYPLGLSPTTAASPNLSYSRPYGHLLSYPYTEPANP GDSYLSQCQPAALSQPLCGPAEHPQELEADSEKPRLSPEPSERRPQAPAKKLRKPRTYSSLQL QHLNQRQHTQYLALPERAQLAAQLGLTQTQVKIWFQNKRSKYKLLKQNSGGQEGDFPGRTFS VSPCSPPLPSLWDLPKAGTLPTSGYGNSFGAWYQHHSSDVLASPQMM
Host	Rabbit
Reactivity	Human

Quality Control Testing	Antibody reactive against mammalian transfected lysate.
Storage Buffer	No additive
Storage Instruction	Store at -20°C or lower. Aliquot to avoid repeated freezing and thawing.

Applications

- Western Blot (Transfected lysate)

Western Blot analysis of DLX4 expression in transfected 293T cell line ([H00001748-T01](#)) by DLX4 MaxPab polyclonal antibody.

Lane 1: DLX4 transfected lysate(26.30 KDa).

Lane 2: Non-transfected lysate.

[Protocol Download](#)

- Immunoprecipitation

Immunoprecipitation of DLX4 transfected lysate using anti-DLX4 MaxPab rabbit polyclonal antibody and Protein A Magnetic Bead, and immunoblotted with DLX4 MaxPab mouse polyclonal antibody (B01) ([H00001748-B01](#)).

[Protocol Download](#)

Gene Info — DLX4

Entrez GeneID	1748
GeneBank Accession#	NM_138281.1
Protein Accession#	NP_612138.1
Gene Name	DLX4
Gene Alias	BP1, DLX7, DLX8, DLX9
Gene Description	distal-less homeobox 4
Omim ID	601911
Gene Ontology	Hyperlink

Gene Summary

Many vertebrate homeo box-containing genes have been identified on the basis of their sequence similarity with Drosophila developmental genes. Members of the Dlx gene family contain a homeo box that is related to that of Distal-less (Dll), a gene expressed in the head and limbs of the developing fruit fly. The Distal-less (Dlx) family of genes comprises at least 6 different members, DLX1-DLX6. The DLX proteins are postulated to play a role in forebrain and craniofacial development. Three transcript variants have been described for this gene, however, the full length nature of one variant has not been described. Studies of the two splice variants revealed that one encoded isoform functions as a repressor of the beta-globin gene while the other isoform lacks that function. [provided by RefSeq]

Other Designations

beta protein 1|distal-less homeo box 7|distal-less homeo box 9

Disease

- [Cleft Lip](#)
- [Cleft Palate](#)
- [Tooth Abnormalities](#)